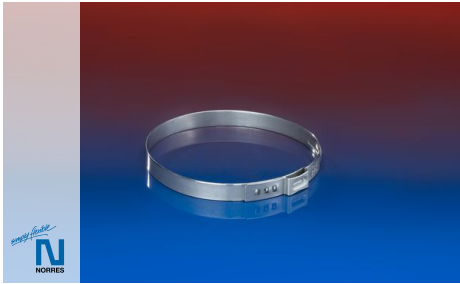


## CLAMP 682



Single ear clamp for assembly of membrane diffuser tubes on adapter bodies

### Applications

- membrane tube diffuser, for industrial and municipal wastewater treatment plant, pressure diffusion with fine bubbles, oxygen input for nitrification in activation basins, permanent and intermitten ventilation
- oxygen input and circulation in xed-bed and bioreactors, thorough mixing of activation basins, sand trap louvre ventilation, renaturation of lakes and rivers, aquacultures, sh farming

### Properties

- conforms to RoHS guideline

### Design

- clamp strip: W2 stainless steel 1.4301 = AISI 304

Size	I.D.	Weight	Band Width	Order No.
(mm)	(mm)	(kg/pcs)	(mm)	
Clamps: stainless steel (INOX) 1.4301 (stamped) = AISI 304; for PRO2AIR Pre-PUR				
63	66,5	0,009	7	682-0665-2720
Clamps: stainless steel (INOX) 1.4571 (stamped) = AISI 316Ti; for PRO2AIR Pre-PUR				
63	66,5	0,009	7	682-0665-2721
Clamps: stainless steel (INOX) 1.4301 (stamped) = AISI 304; for EPDM and silicone				
63	68,0	0,010	7	682-0680-2720

Overpressure and underpressure are recommended threshold operating values, products can be subjected to higher loads upon request. The bending radius is measured through the inside of the hose arch. The right to make technical modifications is reserved. All values determined at 20°C and are approx. data. Additional information at [www.norres.com/en/technology/](http://www.norres.com/en/technology/).