

## Membrane tube diffuser

### Applications

- membrane tube diffusor, for industrial and municipal wastewater treatment plant, pressure diffusion with fine bubbles, oxygen input for nitrification in activation basins, permanent and intermittent ventilation
- oxygen input and circulation in xed-bed and bioreactors, thorough mixing of activation basins, sand trap louvre ventilation, renaturation of lakes and rivers, aquacultures, sh farming

### Properties

- high energy savings when compared with comparative, market standard EPDM and silicone diffusers due to the much lower pressure loss
- extremely long lifetime and no curing due to the membrane not including a plasticizer
- very wide operating range: normal operation: 3-8, minimum 1, maximum 15 and purging operation 18 Nm<sup>3</sup>/(h\*m<sub>aer.</sub>)
- comparatively high oxygen input and oxygen transfer efficiency even with low density systems
- very fine and uniform bubble formation due to an optimized perforation

- easily and quickly fitted
- extremely tear-resistant and abrasion-resistant (mechanical strength around 2.5-4 times that of most of the EPDM and silicone materials)
- very good resistance to waste water and municipal sewerage in accordance with the latest instructions DWA-M 115
- microbe and hydrolysis resistant
- good resistance to oil, gasoline and chemicals
- conforms to RoHS guideline

### Temperature Range

- -40 °C to 90 °C

### Design

- wall: special premium polyurethane (Pre-PUR®)
- wall thickness 0,5 mm approx.
- Support body: polypropylene
- clamps: stainless steel 1.4301/AISI 304/W2/INOX

### Delivery variants

- further diameters and lengths available on request
- transparent (standard)
- special colours: full coloured
- customer-specific branding

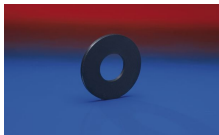
Size (mm)	I.D. (in / mm)	Inner Thread (inch)	Length (mm)	Ventilation Length (mm)	Weight (kg/pcs)	Order No.
Clamps: stainless steel (INOX) 1.4301 (stamped) = AISI 304						
63	64,5	3/4	570	500	0,700	603-0570-2702
63	64,5	1	570	500	0,700	603-0570-2712
63	64,5	3/4	820	750	1,000	603-0820-2702
63	64,5	1	820	750	1,000	603-0820-2712
63	64,5	3/4	1070	1000	1,300	603-1070-2702
63	64,5	1	1070	1000	1,300	603-1070-2712
Clamps: stainless steel (INOX) 1.4571 (stamped) = AISI 316Ti						
63	64,5	3/4	570	500	0,700	603-0570-2722
63	64,5	1	570	500	0,700	603-0570-2742
63	64,5	3/4	820	750	1,000	603-0820-2722
63	64,5	1	820	750	1,000	603-0820-2742
63	64,5	3/4	1070	1000	1,300	603-1070-2722

Overpressure and underpressure are recommended threshold operating values, products can be subjected to higher loads upon request. The bending radius is measured through the inside of the hose arch. The right to make technical modifications is reserved. All values determined at 20 °C and are approx. data. Additional information at [www.norres.com/en/technology/](http://www.norres.com/en/technology/).

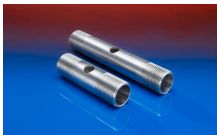


Size	I.D.	Inner Thread	Length	Ventilation Length	Weight	Order No.
(mm)	(in / mm)	(inch)	(mm)	(mm)	(kg/pcs)	
63	64,5	1	1070	1000	1,300	603-1070-2742

Accessories



CONNECT 683



CONNECT 684



CONNECT 685

Overpressure and underpressure are recommended threshold operating values, products can be subjected to higher loads upon request. The bending radius is measured through the inside of the hose arch. The right to make technical modifications is reserved. All values determined at 20°C and are approx. data. Additional information at [www.norres.com/en/technology/](http://www.norres.com/en/technology/).