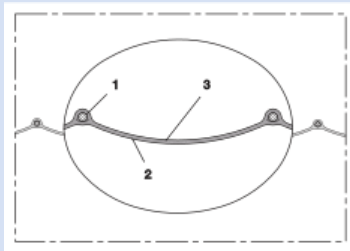


PROTAPE® PVC 371 BLACK (XLD)



PVC air conditioning hose, flame resistant, black

Applications

- flexible hose/ ducting for gases
- Ventilation, air conditioning, heating system

Properties

- fabric reinforced
- super-light weight

- highly flexible + compressible 6:1
- flame-retardant according to: EN13501-1:2018, B-s1, d0
- conforms to RoHS guideline

Temperature range

- 32°F to 167°F

Design

- PROTAPE® tape hose
- Pressure max. 200 mm H2O
- Air speed max. 20 m/s
- Bending radius 0,6 x ID

Delivery variants

- further diameters and lengths available on request
- black (standard)

I.D.	outer Ø	Bending radius	Weight	Production lengths	Order No.
(in / mm)	(in)	(in)	(lb/ft)	(ft)	
3 / 75-76	3.055	1.811	0.087	25	371-0076-3503
- / 82	3.345	1.929	0.108	25	371-0082-3503
4 / 100-102	4.134	2.402	0.108	25	371-0102-3503
5 / 125-127	5.118	2.992	0.134	25	371-0127-3503
6 / 150-152	6.117	3.583	0.168	25	371-0152-3503
6,3 / 160	6.433	3.780	0.175	25	371-0160-3503
7 / 178-180	7.220	4.252	0.195	25	371-0180-3503
8 / 200-203	8.126	4.803	0.242	25	371-0203-3503
10 / 254	10.134	5.984	0.302	25	371-0254-3503
12 / 305	12.024	7.205	0.363	25	371-0305-3503
- / 315	12.535	7.441	0.329	25	371-0315-3503
14 / 356	14.150	8.425	0.376	25	371-0356-3503
16 / 405-406	16.118	9.606	0.423	25	371-0406-3503
18 / 457	18.156	10.787	0.524	25	371-0457-3503
20 / 508	20.165	12.008	0.585	25	371-0508-3503
24 / 610	24.181	14.409	0.699	25	371-0610-3503

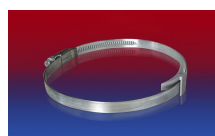
Accessories



CONNECT 228



CONNECT 270-271



CLAMP 210 BRIDGE CLAMP



CLAMP 208

Positive and negative pressure ratings are the recommended maximum operating values. Products can be manufactured to meet higher operating values upon request. The bend radius is calculated from the center of the hose in an arched position. Additional information at www.norres.com/us/technology/. NORRES reserves the right to modify technical data at any time. Technical data based on tests at 68°F and are approx. values. Proper use and maintenance of NORRES hoses is the sole responsibility of purchaser and ultimate user of the product. The individual conditions, applications and the number of variables make firm recommendations technically impossible. This information is intended as a general guide only.