

# PROTAPE® PVC 371 BLACK (XLD)



PVC air conditioning hose, flame resistant, black

## Applications

- flexible hose/ ducting for gases
- Ventilation, air conditioning, heating system

## Properties

- fabric reinforced
- super-light weight

- highly flexible + compressible 6:1
- flame-retardant according to: EN13501-1:2018, B-s1, d0
- conforms to RoHS guideline

## Temperature Range

- 0°C to 75°C

## Design

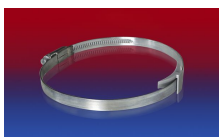
- PROTAPE® tape hose
- Pressure max. 200 mm H2O
- Air speed max. 20 m/s
- Bending radius 0,6 x ID

## Delivery variants

- further diameters and lengths available on request
- black (standard)

I.D.	outer Ø	Bending Radius	Weight	Production Lengths	Order No.
(in / mm)	(mm)	(mm)	(kg/m)	(m)	
3 / 75-76	77.60	46.00	0.13	10	371-0076-3503
- / 82	84.96	49.00	0.16	10	371-0082-3503
4 / 100-102	105.00	61.00	0.16	10	371-0102-3503
5 / 125-127	130.00	76.00	0.20	10	371-0127-3503
6 / 150-152	155.36	91.00	0.25	10	371-0152-3503
6,3 / 160	163.40	96.00	0.26	10	371-0160-3503
7 / 178-180	183.40	108.00	0.29	5 6	371-0180-3503
8 / 200-203	206.40	122.00	0.36	10	371-0203-3503
10 / 254	257.40	152.00	0.45	10	371-0254-3503
12 / 305	305.40	183.00	0.54	10	371-0305-3503
- / 315	318.40	189.00	0.49	10	371-0315-3503
14 / 356	359.40	214.00	0.56	10	371-0356-3503
16 / 405-406	409.40	244.00	0.63	10	371-0406-3503
18 / 457	461.16	274.00	0.78	10	371-0457-3503
20 / 508	512.20	305.00	0.87	10	371-0508-3503
24 / 610	614.20	366.00	1.04	10	371-0610-3503

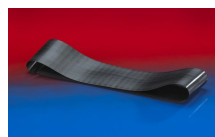
## Accessories



CLAMP 210 BRIDGE CLAMP



CONNECT 270-271



CONNECT 228



CLAMP 208

Overpressure and underpressure are recommended threshold operating values, products can be subjected to higher loads upon request. The bending radius is measured through the inside of the hose arch. The right to make technical modifications is reserved. All values determined at 20°C and are approx. data. Additional information at [www.norres.com/en/technology/](http://www.norres.com/en/technology/).