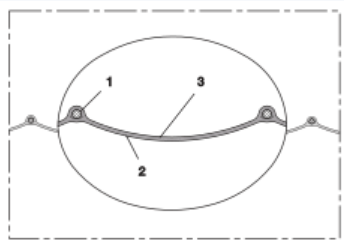
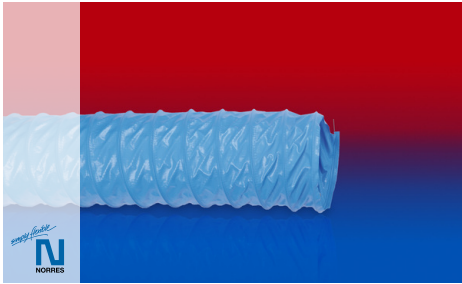


PROTAPE® PVC 371 ANTI-BACTERIAL (XLD)



PVC air conditioning hose, antibacterial, flame resistant

Applications

- flexible hose/ ducting for gases
- Ventilation, air conditioning, heating system

Properties

- fabric reinforced
- super-light weight
- highly flexible + compressible 6:1

- anti-bacterial
- flame-retardant according to: EN13501-1:2018, B-s1, d0
- conforms to RoHS guideline

Temperature range

- 15°F to 175°F

Design

- PROTAPE® tape hose

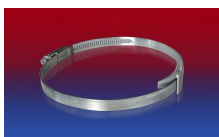
- spring steel wire integrated in wall
- wall: PVC coated fabric
- wall thickness 0.2 mm approx.
- Pressure max. 200 mm H2O
- Air speed max. 20 m/s
- Bending radius 0,6 x ID

Delivery variants

- further diameters and lengths available on request
- blue (standard)

I.D.	outer Ø	Bending radius	Weight	Dimensions in Stock	Production lengths	Order No.
(in / mm)	(in)	(in)	(lb/ft)	(ft)	(ft)	
3 / 75-76	3.055	1.811	0.087	-	25	371-0076-3501
- / 82	3.345	1.929	0.108	-	25	371-0082-3501
3,5 / 89-90	3.661	2.126	0.114	-	25	371-0090-3501
4 / 100-102	4.134	2.402	0.108	-	25	371-0102-3501
5 / 125-127	5.118	2.992	0.134	-	25	371-0127-3501
6 / 150-152	6.117	3.583	0.168	-	25	371-0152-3501
6,3 / 160	6.433	3.780	0.175	-	25	371-0160-3501
7 / 178-180	7.220	4.252	0.195	-	25	371-0180-3501
8 / 200-203	8.126	4.803	0.242	-	25	371-0203-3501
10 / 254	10.134	5.984	0.302	-	25	371-0254-3501
12 / 305	12.024	7.205	0.363	-	25	371-0305-3501
- / 315	12.535	7.441	0.329	-	25	371-0315-3501
14 / 356	14.150	8.425	0.376	-	25	371-0356-3501
16 / 405-406	16.118	9.606	0.423	-	25	371-0406-3501
18 / 457	18.156	10.787	0.524	-	25	371-0457-3501
20 / 508	20.165	12.008	0.585	-	25	371-0508-3501
24 / 610	24.181	14.409	0.699	-	25	371-0610-3501

Accessories



CLAMP 210 BRIDGE CLAMP



CONNECT 228



CONNECT 270-271



CLAMP 208

Positive and negative pressure ratings are the recommended maximum operating values. Products can be manufactured to meet higher operating values upon request. The bend radius is calculated from the center of the hose in an arched position. Additional information at www.norres.com/us/technology/. NORRES reserves the right to modify technical data at any time. Technical data based on tests at 68°F and are approx. values. Proper use and maintenance of NORRES hoses is the sole responsibility of purchaser and ultimately user of the product. The individual conditions, applications and the number of variables make firm recommendations technically impossible. This information is intended as a general guide only.