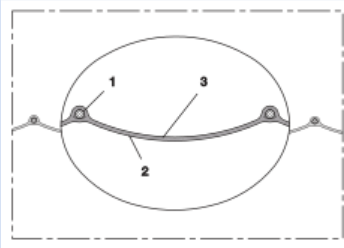
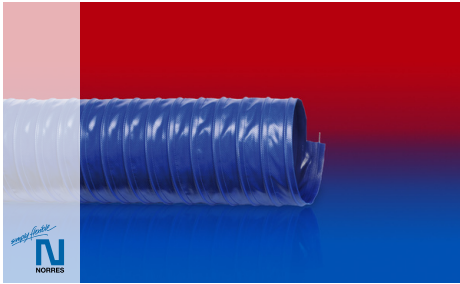


# PROTAPE® PVC 371 (HD)



## PVC ventilation hose, heavy duty

### Applications

- flexible hose/ ducting for gases
- extraction unit, dust collection systems, filter system, oil mist extraction
- galvanic extraction
- chemical industry: chemical vapors, vapor return hose at loading arm, paint steam, spray mist extraction

### Properties

- fabric reinforced

- heavy duty
- flexible
- good resistance to alkalis and acids
- approved to ISO3795 (self-extinguishing)
- conforms to RoHS guideline

### Temperature range

- 4°F to 194°F

### Design

- PROTAPE® tape hose
- spring steel wire integrated in wall
- fabric-reinforced tape
- wall: PVC coated fabric
- wall thickness 0.02 in approx.

### Delivery variants

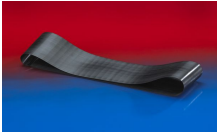
- further diameters and lengths available on request
- blue (standard)

I.D.	outer Ø	Pressure	Vacuum	Bending radius	Weight	Dimensions in Stock	Production lengths	Order No.
(in / mm)	(in)	(psi)	(inHG)	(in)	(lb/ft)	(ft)	(ft)	
2 / 50-51	2.094	5.947	5.168	1.606	0.262	-	32,5 50 65	371-0050-3401
2,36 / 60	2.449	4.931	3.839	1.890	0.296	-	32,5 50 65	371-0060-3401
- / 70	2.843	4.279	3.248	2.205	0.269	-	32,5 50 65	371-0070-3401
3 / 75-76	3.079	3.989	2.805	2.394	0.370	-	32,5 50 65	371-0075-3401
- / 80	3.236	3.699	2.805	2.520	0.397	-	32,5 50 65	371-0080-3401
3,5 / 89-90	3.630	3.336	2.510	2.835	0.437	-	32,5 50 65	371-0090-3401
4 / 100-102	4.110	2.973	1.772	3.213	0.444	-	32,5 50 65	371-0100-3401
- / 110	4.425	2.683	1.624	3.465	0.477	-	32,5 50 65	371-0110-3401
4,72 / 120	4.819	2.466	1.477	3.780	0.524	-	32,5 50 65	371-0120-3401
5 / 125-127	5.094	2.393	1.181	4.000	0.551	-	32,5 50 65	371-0125-3401
5,5 / 140	5.606	-	-	4.409	0.618	-	32,5 50 65	371-0140-3401
6 / 150-152	6.079	1.958	1.181	4.787	0.679	-	32,5 50 65	371-0150-3401
6,3 / 160	6.394	1.886	0.738	5.039	0.726	-	32,5 50 65	371-0160-3401
7 / 178-180	7.189	1.668	0.738	5.669	0.813	-	32,5 50 65	371-0180-3401
8 / 200-203	8.094	1.523	0.738	6.394	1.176	-	32,5 50 65	371-0200-3401
- / 250	9.945	1.233	0.591	7.874	1.358	-	32,5 50 65	371-0250-3401
10 / 254	10.102	1.233	0.591	8.000	1.358	-	32,5 50 65	371-0254-3401
- / 300	11.913	1.015	0.295	9.449	1.512	-	32,5 50 65	371-0300-3401
12 / 305	12.110	1.015	0.295	9.606	1.512	-	32,5 40	371-0305-3401
- / 350	13.890	0.000	0.295	11.024	1.734	-	32,5 40	371-0350-3401
14 / 356	14.126	0.000	0.295	11.213	1.734	-	32,5 40	371-0356-3401
- / 400	15.858	0.508	0.148	12.598	1.828	-	32,5 40	371-0400-3401
16 / 405-406	16.094	0.508	0.148	12.787	1.828	-	32,5 40	371-0406-3401
- / 500	19.803	4.351	0.148	15.748	2.097	-	32,5 40	371-0500-3401
20 / 508	20.118	0.435	0.148	16.000	2.097	-	32,5 40	371-0508-3401

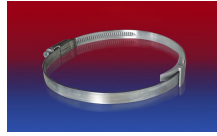
Positive and negative pressure ratings are the recommended maximum operating values. Products can be manufactured to meet higher operating values upon request. The bend radius is calculated from the center of the hose in an arched position. Additional information at [www.norres.com/us/technology/](http://www.norres.com/us/technology/). NORRES reserves the right to modify technical data at any time. Technical data based on tests at 68 °F and are approx. values. Proper use and maintenance of NORRES hoses is the sole responsibility of purchaser and ultimate user of the product. The individual conditions, applications and the number of variables make firm recommendations technically impossible. This information is intended as a general guide only.

# PROTAPE® PVC 371 (HD)

## Accessories



CONNECT 228



CLAMP 210 BRIDGE CLAMP



CLAMP 208



CONNECT 270-271