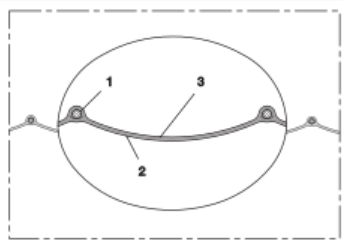


PROTAPE® PVC 371 (LD)



PVC ventilation hose (to +110°C)

Applications

- flexible hose/ ducting for gases
- welding fume extraction
- extraction arm
- animal stall, animal shed: barn ventilation
- construction industry: tunnel ventilation
- bus, utility vehicle, caravan/ trailer, mobile home/ camper/ RV, boat, ship/ vessel/ marine, yacht: ventilation, heating
- asbestos removal
- construction drying
- tent heating, airport gangway heating, heaters for construction sites
- heating system/ heater: fresh air supply

Properties

- fabric reinforced
- super-light weight
- highly flexible + compressible 6:1
- good resistance to alkalis and acids
- good resistance to chemicals
- Flame-retardant wall according to NF P 92-503 M2
- conforms to RoHS guideline
- REACH according to --> Technology / Technical Information / REACH

Temperature Range

- -10°C to 80°C

- short time to 110°C

Design

- PROTAPE® tape hose
- spring steel wire integrated in wall
- fabric-reinforced tape
- wall: PVC coated fabric
- wall thickness 0,25 mm approx.

Delivery variants

- further diameters and lengths available on request
- grey (standard), black, white
- customer-specific branding
- compressed packed in poly bag (low transportation cost / risk, minimum storage size)

I.D. (in / mm)	outer Ø (mm)	Pressure (bar)	Vacuum (bar)	Bending Radius (mm)	Weight (kg/m)	Dimensions in Stock (m)	Production Lengths (m)	Order No.
black								
3 / 75-76	79.00	0,160	0,080	41.00	0.18	-	7,5 15	371-0076-0001
- / 80	83.00	0,150	0,080	43.00	0.19	-	7,5 15	371-0080-0001
4 / 100-102	105.00	0,120	0,050	54.00	0.24	-	7,5 15	371-0102-0001
5 / 125-127	130.00	0,095	0,035	67.00	0.32	-	7,5 15	371-0127-0001
6,3 / 160	163.00	0,075	0,020	83.00	0.44	-	7,5	371-0160-0001
8 / 200-203	206.00	0,060	0,020	105.00	0.60	-	7,5 15	371-0203-0001
10 / 254	258.00	0,045	0,015	131.00	0.79	-	7,5 15	371-0254-0001
grey								
- / 40	43.00	0,300	0,170	23.00	0.10	-	10	371-0040-0000
2 / 50-51	54.00	0,240	0,145	29.00	0.12	6	10	371-0051-0000
2,36 / 60	63.00	0,200	0,110	33.00	0.14	10	6	371-0060-0000
3 / 75-76	79.00	0,160	0,080	41.00	0.18	10	6	371-0076-0000
- / 80	83.00	0,150	0,080	43.00	0.19	10	6	371-0080-0000
3,5 / 89-90	93.00	0,135	0,070	48.00	0.20	-	6	371-0090-0000
4 / 100-102	105.00	0,120	0,050	54.00	0.24	6 10	-	371-0102-0000
- / 110	113.00	0,110	0,045	58.00	0.27	10	6	371-0110-0000
5 / 125-127	130.00	0,095	0,035	67.00	0.32	6 10	-	371-0127-0000
5,5 / 140	143.00	0,085	0,035	73.00	0.35	10	6	371-0140-0000
6 / 150-152	155.00	0,080	0,035	79.00	0.37	6 10	-	371-0152-0000
6,3 / 160	163.00	0,075	0,020	83.00	0.44	6 10	-	371-0160-0000

Overpressure and underpressure are recommended threshold operating values, products can be subjected to higher loads upon request. The bending radius is measured through the inside of the hose arch. The right to make technical modifications is reserved. All values determined at 20°C and are approx. data. Additional information at www.norres.com/en/technology/.

PROTAPE® PVC 371 (LD)

I.D.	outer Ø	Pressure	Vacuum	Bending Radius	Weight	Dimensions in Stock	Production Lengths	Order No.
(in / mm)	(mm)	(bar)	(bar)	(mm)	(kg/m)	(m)	(m)	
7 / 178-180	183.00	0,065	0,020	93.00	0.54	10	6	371-0180-0000
8 / 200-203	206.00	0,060	0,020	105.00	0.60	6 10	-	371-0203-0000
10 / 254	258.00	0,045	0,015	131.00	0.79	6 10	-	371-0254-0000
12 / 305	309.00	0,040	0,010	157.00	0.95	10	6	371-0305-0000
14 / 356	360.00	0,035	0,010	182.00	1.11	10	6	371-0356-0000
16 / 405-406	410.00	0,030	0,005	207.00	1.28	10	6	371-0406-0000
20 / 508	514.00	0,025	0,005	260.00	1.56	-	6 10	371-0508-0000

Accessories



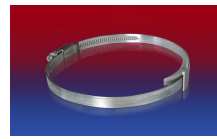
CONNECT 223



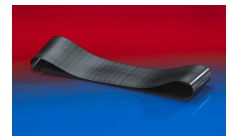
CONNECT 270-271



CLAMP 208



CLAMP 210 BRIDGE CLAMP



CONNECT 228

Overpressure and underpressure are recommended threshold operating values, products can be subjected to higher loads upon request. The bending radius is measured through the inside of the hose arch. The right to make technical modifications is reserved. All values determined at 20°C and are approx. data. Additional information at www.norres.com/en/technology/.