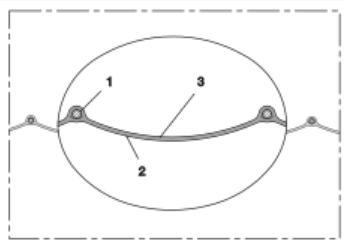


PROTAPE® PUR 370 (LD)



Polyurethane ducting, (to +125°C)

Applications

- flexible hose/ ducting for gases and for abrasive dust, powder, fibres
- air supply: UV dryer, IR dryer
- welding fume extraction
- extraction arm
- tent heating, airport gangway heating, heaters for construction sites

Properties

- fabric reinforced
- super-light weight

- highly flexible + compressible 4:1
- abrasion-resistant
- good resistance to oil, gasoline and chemicals
- Flame-retardant wall according to: NF P 92-503 M1
- conforms to RoHS guideline
- REACH according to --> Technology / Technical Information / REACH

Temperature Range

- 40°C to 125°C

Design

- spring steel wire integrated in wall
- fabric-reinforced tape
- wall: polyurethane coated fabric
- wall thickness 0,25 mm approx.

Delivery variants

- further diameters and lengths available on request
- dark-grey (standard)
- customer-specific branding
- compressed packed in poly bag (low transportation cost / risk, minimum storage size)

I.D.	outer Ø	Pressure	Vacuum	Bending Radius	Weight	Dimensions in Stock	Production Lengths	Order No.
(in / mm)	(mm)	(bar)	(bar)	(mm)	(kg/m)	(m)	(m)	
2 / 50-51	59.00	0,905	0,335	34.00	0.84	-	7,5	370-0051-0000
2,5 / 63-65	73.00	0,700	0,265	38.00	0.80	-	7,5 15	370-0065-0000
3 / 75-76	84.00	0,680	0,23	38.00	0.77	-	7,5 15	370-0076-0000
- / 80	88.00	0,570	0,215	32.00	0.78	-	7,5 15	370-0080-0000
3,5 / 89-90	98.00	0,505	0,19	38.00	0.80	-	7,5 15	370-0090-0000
4 / 100-102	110.00	0,455	0,14	41.00	0.80	15	7,5	370-0102-0000
5 / 125-127	138.00	0,365	0,105	32.00	0.93	-	7,5 15	370-0127-0000
5,5 / 140	151.00	0,325	0,095	35.00	1.04	-	7,5 15	370-0140-0000
6 / 150-152	163.00	0,305	0,085	32.00	1.07	15	7,5	370-0152-0000
6,5 / 165	176.00	0,275	0,08	50.00	1.27	15	7,5	370-0165-0000
7 / 178-180	196.00	0,255	0,075	58.00	1.48	-	15	370-0180-0000
8 / 200-203	216.00	0,230	0,055	69.00	1.75	-	7,5 15	370-0203-0000
10 / 254	268.00	0,180	0,045	59.00	1.99	-	7,5	370-0254-0000

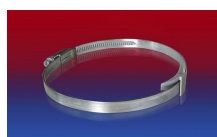
Accessories



CONNECT 223



CONNECT 270-271



CLAMP 210 BRIDGE CLAMP



CONNECT 228



CLAMP 208

Overpressure and underpressure are recommended threshold operating values, products can be subjected to higher loads upon request. The bending radius is measured through the inside of the hose arch. The right to make technical modifications is reserved. All values determined at 20°C and are approx. data. Additional information at www.norres.com/en/technology/.