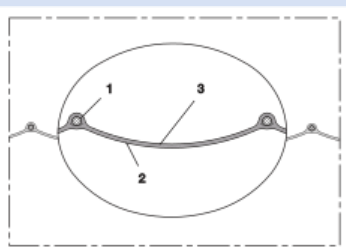


PROTAPE® ALU-PVC 369



Alu/PVC air conditioning hose, flame resistant

Applications

- flexible hose/ ducting for gases
- welding fume extraction
- Ventilation, air conditioning, heating system

Properties

- super-light weight

- highly flexible + compressible 10:1
- conforms to RoHS guideline

Temperature range

- 14°F to 284°F

Design

- PROTAPE® tape hose

- Pressure max. 250 mm H2O
- Air speed max. 25 m/s
- Bending radius 0,6 x ID

Delivery variants

- further diameters and lengths available on request
- black (standard)

I.D.	outer Ø	Bending radius	Weight	Production lengths	Order No.
(in / mm)	(in)	(in)	(lb/ft)	(ft)	
3 / 75-76	3.055	1.811	0.000	25	369-0076-3506
- / 82	3.345	1.929	0.000	25	369-0082-3506
4 / 100-102	4.134	2.402	0.000	25	369-0102-3506
5 / 125-127	5.118	2.992	0.000	25	369-0127-3506
6 / 150-152	6.117	3.583	0.000	25	369-0152-3506
6,3 / 160	6.433	3.780	0.000	25	369-0160-3506
7 / 178-180	7.220	4.252	0.000	25	369-0180-3506
8 / 200-203	8.126	4.803	0.000	25	369-0203-3506
10 / 254	10.134	5.984	0.000	25	369-0254-3506
12 / 305	12.024	7.205	0.000	25	369-0305-3506
- / 315	12.535	7.441	0.000	25	369-0315-3506
14 / 356	14.150	8.425	0.000	25	369-0356-3506
16 / 405-406	16.118	9.606	0.000	25	369-0406-3506
18 / 457	18.156	10.787	0.000	25	369-0457-3506
20 / 508	20.165	12.008	0.000	25	369-0508-3506
24 / 610	24.181	14.409	0.000	25	369-0610-3506

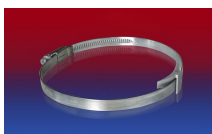
Accessories



CLAMP 208



CONNECT 228



CLAMP 210 BRIDGE CLAMP



CONNECT 270-271

Positive and negative pressure ratings are the recommended maximum operating values. Products can be manufactured to meet higher operating values upon request. The bend radius is calculated from the center of the hose in an arched position. Additional information at www.norres.com/us/technology/. NORRES reserves the right to modify technical data at any time. Technical data based on tests at 68°F and are approx. values. Proper use and maintenance of NORRES hoses is the sole responsibility of purchaser and ultimate user of the product. The individual conditions, applications and the number of variables make firm recommendations technically impossible. This information is intended as a general guide only.