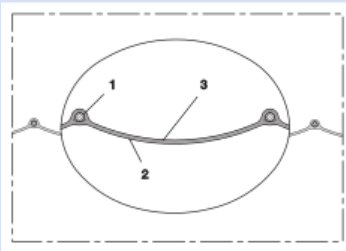


PROTAPE® ALU-PES 369



Aluminium/Polyester air conditioning hose, flame-resistant (M1)

Applications

- flexible hose/ ducting for gases
- Ventilation, air conditioning, heating system
- Bathroom and kitchen extraction and ventilation

Properties

- super-light weight

- highly flexible + compressible 20:1
- flame-retardant according to: EN13501-1:2018, B-s1, d0
- conforms to RoHS guideline

Temperature range

- 22°F to 284°F

Design

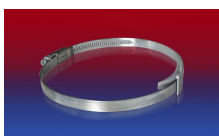
- PROTAPE® tape hose
- spring steel wire integrated in wall
- fabric-reinforced tape; wall: aluminum coated fabric
- Pressure max. 250 mm H2O
- Air speed max. 30 m/s

Delivery variants

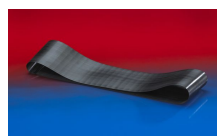
- further diameters and lengths available on request
- silver

I.D.	outer Ø	Bending radius	Weight	Dimensions in Stock	Production lengths	Order No.
(in / mm)	(in)	(in)	(lb/ft)	(ft)	(ft)	
3 / 75-76	3.055	2.402	0.040	-	25	369-0076-3504
- / 82	3.345	2.598	0.040	-	25	369-0082-3504
4 / 100-102	4.134	3.189	0.054	-	25	369-0102-3504
5 / 125-127	5.118	3.976	0.054	-	25	369-0130-3504
6 / 150-152	6.117	4.764	0.074	-	25	369-0152-3504
6,3 / 160	6.433	5.039	0.081	-	25	369-0160-3504
7 / 178-180	7.220	5.669	0.101	-	25	369-0180-3504
8 / 200-203	8.126	6.339	0.114	-	25	369-0203-3504
10 / 254	10.134	7.992	0.161	-	25	369-0254-3504
12 / 305	12.024	9.606	0.188	-	25	369-0305-3504
- / 315	12.535	9.921	0.195	-	25	369-0315-3504
14 / 356	14.150	11.220	0.235	-	25	369-0356-3504
16 / 405-406	16.118	12.756	0.269	-	25	369-0406-3504
18 / 457	18.156	14.409	0.309	-	25	369-0457-3504
20 / 508	20.165	15.984	0.343	-	25	369-0508-3504
24 / 610	24.181	19.213	0.524	-	25	369-0610-3504

Accessories



CLAMP 210 BRIDGE CLAMP



CONNECT 228



CONNECT 270-271



CLAMP 208

Positive and negative pressure ratings are the recommended maximum operating values. Products can be manufactured to meet higher operating values upon request. The bend radius is calculated from the center of the hose in an arched position. Additional information at www.norres.com/us/technology/. NORRES reserves the right to modify technical data at any time. Technical data based on tests at 68°F and are approx. values. Proper use and maintenance of NORRES hoses is the sole responsibility of purchaser and ultimate user of the product. The individual conditions, applications and the number of variables make firm recommendations technically impossible. This information is intended as a general guide only.