

# ISODUC ALU-PES 368 SE



Aluminium/fiber glass air conditioning hose, insulated, flame resistant (M0)

### Applications

- flexible hose/ ducting for gases
- Air conditioning in marine applications
- Thermal and acoustic insulation

### Properties

- highly flexible + compressible 6:1

- insulating
- Flame-retardant wall according to C.S.T.B. class M0-M1 (France)
- conforms to RoHS guideline

### Temperature range

- 22°F to 482°F

### Design

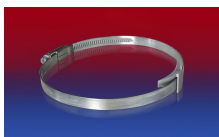
- special thermal insulation layer
- Fiberglass insulation: thickness 25 mm and density 16 Kg/m<sup>3</sup>
- Pressure max. 300 mm H<sub>2</sub>O
- Air speed max. 30 m/s

### Delivery variants

- further diameters and lengths available on request
- silver

I.D.	outer Ø	Bending radius	Weight	Production lengths	Order No.
(in / mm)	(in)	(in)	(lb/ft)	(ft)	
3 / 75-76	3.055	2.992	0.000	25	368-0076-3507
- / 82	3.345	3.228	0.000	25	368-0082-3507
4 / 100-102	4.134	4.016	0.000	25	368-0102-3507
5 / 125-127	5.118	5.000	0.000	25	368-0127-3507
6 / 150-152	6.117	5.984	0.000	25	368-0152-3507
6,3 / 160	6.433	6.299	0.000	25	368-0160-3507
7 / 178-180	7.220	7.087	0.000	25	368-0180-3507
8 / 200-203	8.126	7.992	0.000	25	368-0203-3507
10 / 254	10.134	10.000	0.000	25	368-0254-3507
12 / 305	12.024	12.008	0.000	25	368-0305-3507
- / 315	12.535	12.402	0.000	25	368-0315-3507
14 / 356	14.150	14.016	0.000	25	368-0356-3507
16 / 405-406	16.118	15.984	0.000	25	368-0406-3507
18 / 457	18.156	17.992	0.000	25	368-0457-3507
20 / 508	20.165	20.000	0.000	25	368-0508-3507
24 / 610	24.181	24.016	0.000	25	368-0610-3507

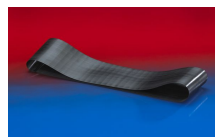
## Accessories



CLAMP 210 BRIDGE CLAMP



CONNECT 270-271



CONNECT 228



CLAMP 208

Positive and negative pressure ratings are the recommended maximum operating values. Products can be manufactured to meet higher operating values upon request. The bend radius is calculated from the center of the hose in an arched position. Additional information at [www.norres.com/us/technology/](http://www.norres.com/us/technology/). NORRES reserves the right to modify technical data at any time. Technical data based on tests at 68°F and are approx. values. Proper use and maintenance of NORRES hoses is the sole responsibility of purchaser and ultimate user of the product. The individual conditions, applications and the number of variables make firm recommendations technically impossible. This information is intended as a general guide only.