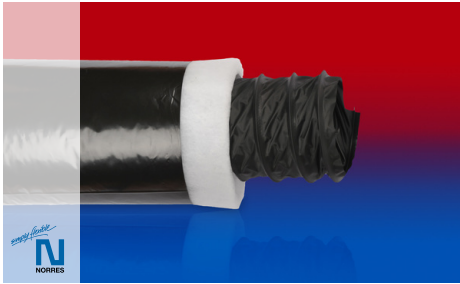


ISODUC PVC 368 BLACK



PVC air conditioning hose, insulated, flame resistant, black

Applications

- flexible hose/ ducting for gases
- Air conditioning
- Thermal and acoustic insulation

Properties

- fabric reinforced
- highly flexible + compressible 6:1

- flame-retardant according to: EN13501-1:2018, B-s2, d0
- insulating
- conforms to RoHS guideline
- Polyester insulation: thickness 25 mm, density 17 kg/m³
- Pressure max. 200 mm H₂O
- Air speed max. 20 m/s
- Bending radius 0,6 x ID

Temperature Range

- 0°C to 75°C

Design

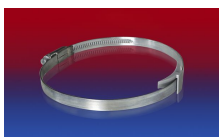
- special thermal insulation layer

Delivery variants

- further diameters and lengths available on request
- black (standard)

I.D.	outer Ø	Bending Radius	Weight	Production Lengths	Order No.
(in / mm)	(mm)	(mm)	(kg/m)	(m)	
3 / 75-76	126.60	61.00	0.25	10	368-0076-3503
- / 82	132.60	66.00	0.28	10	368-0082-3503
4 / 100-102	152.60	82.00	0.31	10	368-0102-3503
5 / 125-127	177.60	102.00	0.37	10	368-0127-3503
6 / 150-152	202.60	122.00	0.45	10	368-0152-3503
6,3 / 160	210.60	128.00	0.47	10	368-0160-3503
7 / 178-180	230.60	144.00	0.52	10	368-0180-3503
8 / 200-203	253.60	162.00	0.62	10	368-0203-3503
10 / 254	304.60	203.00	0.78	10	368-0254-3503
12 / 305	355.60	244.00	0.92	10	368-0305-3503
- / 315	365.60	252.00	0.88	10	368-0315-3503
14 / 356	406.60	285.00	1.00	10	368-0356-3503
16 / 405-406	456.60	325.00	1.12	10	368-0406-3503
18 / 457	507.60	366.00	1.33	10	368-0457-3503
20 / 508	558.60	406.00	1.48	10	368-0508-3503
24 / 610	660.60	488.00	1.77	10	368-0610-3503

Accessories



CLAMP 210 BRIDGE CLAMP



CONNECT 228



CLAMP 208



CONNECT 270-271

Overpressure and underpressure are recommended threshold operating values, products can be subjected to higher loads upon request. The bending radius is measured through the inside of the hose arch. The right to make technical modifications is reserved. All values determined at 20°C and are approx. data. Additional information at www.norres.com/en/technology/.