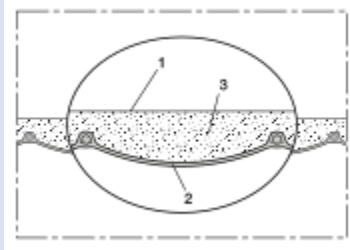


ISODUC PVC 368 ANTI-BACTERIAL



PVC air conditioning hose, insulated, antibacterial, flame resistant

Applications

- flexible hose/ ducting for gases
- Air conditioning
- Thermal and acoustic insulation

Properties

- fabric reinforced
- highly flexible + compressible 6:1

- insulating
- flame-retardant according to: EN13501-1:2018, B-s1, d0
- anti-bacterial
- conforms to RoHS guideline

Temperature range

- 15°F to 175°F

Design

- special thermal insulation layer
- Polyester insulation: thickness 25 mm, weight 250-300 g/m²
- Pressure max. 200 mm H₂O
- Air speed max. 20 m/s
- Bending radius 0,6 x ID

Delivery variants

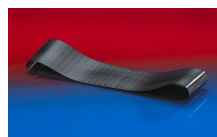
- gray (standard)

I.D.	outer Ø	Bending radius	Weight	Production lengths	Order No.
(in / mm)	(in)	(in)	(lb/ft)	(ft)	
3 / 75-76	4.984	2.402	0.168	25	368-0076-3501
- / 82	5.220	2.598	0.188	25	368-0082-3501
4 / 100-102	6.008	3.228	0.208	25	368-0102-3501
5 / 125-127	6.992	4.016	0.249	25	368-0127-3501
6 / 150-152	7.976	4.803	0.302	25	368-0152-3501
6,3 / 160	8.291	5.039	0.316	25	368-0160-3501
7 / 178-180	9.079	5.669	0.349	25	368-0180-3501
8 / 200-203	9.984	6.378	0.417	25	368-0203-3501
10 / 254	11.992	7.992	0.524	25	368-0254-3501
12 / 305	14.000	9.606	0.618	25	368-0305-3501
- / 315	14.394	9.921	0.591	25	368-0315-3501
14 / 356	16.008	11.220	0.672	25	368-0356-3501
16 / 405-406	17.976	12.795	0.753	25	368-0406-3501
18 / 457	19.984	14.409	0.894	25	368-0457-3501
20 / 508	21.992	15.984	0.995	25	368-0508-3501
24 / 610	26.008	19.213	1.190	25	368-0610-3501

Accessories



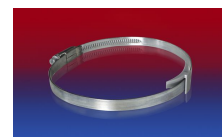
CLAMP 208



CONNECT 228



CONNECT 270-271



CLAMP 210 BRIDGE CLAMP

Positive and negative pressure ratings are the recommended maximum operating values. Products can be manufactured to meet higher operating values upon request. The bend radius is calculated from the center of the hose in an arched position. Additional information at www.norres.com/us/technology/. NORRES reserves the right to modify technical data at any time. Technical data based on tests at 68°F and are approx. values. Proper use and maintenance of NORRES hoses is the sole responsibility of purchaser and ultimate user of the product. The individual conditions, applications and the number of variables make firm recommendations technically impossible. This information is intended as a general guide only.