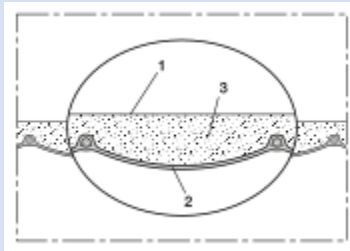


ISODUC PVC 368 ANTI-BACTERIAL



PVC air conditioning hose, insulated, antibacterial, flame resistant

Applications

- flexible hose/ ducting for gases
- Air conditioning
- Thermal and acoustic insulation

Properties

- fabric reinforced
- highly flexible + compressible 6:1

- insulating
- flame-retardant according to: EN13501-1:2018, B-s1, d0
- anti-bacterial
- conforms to RoHS guideline

Temperature Range

- -10°C to 80°C

Design

- special thermal insulation layer
- Polyester insulation thickness 25 mm, weight 250-300 g/m²
- Pressure max. 200 mm H₂O
- Air speed max. 20 m/s
- Bending radius 0,6 x ID

Delivery variants

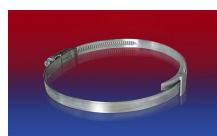
- grey (standard)

I.D.	outer Ø	Bending Radius	Weight	Production Lengths	Order No.
(in / mm)	(mm)	(mm)	(kg/m)	(m)	
3 / 75-76	126.60	61.00	0.25	10	368-0076-3501
- / 82	132.60	66.00	0.28	10	368-0082-3501
4 / 100-102	152.60	82.00	0.31	10	368-0102-3501
5 / 125-127	177.60	102.00	0.37	10	368-0127-3501
6 / 150-152	202.60	122.00	0.45	10	368-0152-3501
6,3 / 160	210.60	128.00	0.47	10	368-0160-3501
7 / 178-180	230.60	144.00	0.52	10	368-0180-3501
8 / 200-203	253.60	162.00	0.62	10	368-0203-3501
10 / 254	304.60	203.00	0.78	10	368-0254-3501
12 / 305	355.60	244.00	0.92	10	368-0305-3501
- / 315	365.60	252.00	0.88	10	368-0315-3501
14 / 356	406.60	285.00	1.00	10	368-0356-3501
16 / 405-406	456.60	325.00	1.12	10	368-0406-3501
18 / 457	507.60	366.00	1.33	10	368-0457-3501
20 / 508	558.60	406.00	1.48	10	368-0508-3501
24 / 610	660.60	488.00	1.77	10	368-0610-3501

Accessories



CLAMP 208



CLAMP 210 BRIDGE CLAMP



CONNECT 228



CONNECT 270-271

Overpressure and underpressure are recommended threshold operating values, products can be subjected to higher loads upon request. The bending radius is measured through the inside of the hose arch. The right to make technical modifications is reserved. All values determined at 20°C and are approx. data. Additional information at www.norres.com/en/technology/.