

PVC air conditioning hose, insulated, flame resistant, gray

#### Applications

- flexible hose/ ducting for gases
- Air conditioning
- Thermal and acoustic insulation

#### Properties

- fabric reinforced
- highly flexible + compressible 6:1
- insulating

- flame-retardant according to: EN13501-1:2018, B-s1, d0
- conforms to RoHS guideline

#### Temperature range

- 15°F to 230°F

#### Design

- PROTAPE® tape hose
- spring steel wire integrated in wall
- wall: PVC coated fabric

- special thermal insulation layer
- Polyester insulation thickness 25 mm and weight 300 g/m<sup>2</sup>
- Pressure max. 200 mm H<sub>2</sub>O
- Air speed max. 20 m/s
- Bending radius 0,6 x ID

#### Delivery variants

- further diameters and lengths available on request
- gray (standard)

I.D.	outer Ø	Bending radius	Weight	Production lengths	Order No.
(in / mm)	(in)	(in)	(lb/ft)	(ft)	
3 / 75-76	4.984	1.811	0.168	25	368-0076-3500
- / 82	5.220	1.929	0.188	25	368-0082-3500
4 / 100-102	6.008	2.402	0.208	25	368-0102-3500
5 / 125-127	6.992	2.992	0.249	25	368-0127-3500
6 / 150-152	7.976	3.583	0.302	25	368-0152-3500
6,3 / 160	8.291	3.780	0.316	25	368-0160-3500
7 / 178-180	9.079	4.252	0.349	25	368-0180-3500
8 / 200-203	9.984	4.803	0.417	25	368-0203-3500
10 / 254	11.992	5.984	0.551	25	368-0254-3500
12 / 305	14.000	7.205	0.618	25	368-0305-3500
- / 315	14.394	7.441	0.591	25	368-0315-3500
14 / 356	16.008	8.425	0.672	25	368-0356-3500
16 / 405-406	17.976	9.606	0.753	25	368-0406-3500
18 / 457	19.984	10.787	0.894	25	368-0457-3500
20 / 508	21.992	12.008	0.995	25	368-0508-3500
24 / 610	26.008	14.409	1.190	25	368-0610-3500

## Accessories



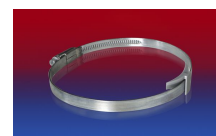
CONNECT 270-271



CONNECT 228



CLAMP 208



CLAMP 210 BRIDGE CLAMP

Positive and negative pressure ratings are the recommended maximum operating values. Products can be manufactured to meet higher operating values upon request. The bend radius is calculated from the center of the hose in an arched position. Additional information at [www.norres.com/us/technology/](http://www.norres.com/us/technology/). NORRES reserves the right to modify technical data at any time. Technical data based on tests at 68°F and are approx. values. Proper use and maintenance of NORRES hoses is the sole responsibility of purchaser and ultimate user of the product. The individual conditions, applications and the number of variables make firm recommendations technically impossible. This information is intended as a general guide only.