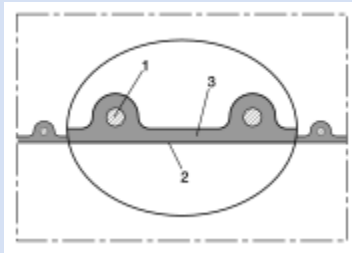


# AIRDUC® TPE 363 (MD)



TPE hose, medium-heavy duty (up to +302°F)

## Applications

- flexible hose/ ducting for hot and cold gases and for powder, bulk material, granulate
- granulate/ plastic dryer, hot air dryer
- film blowing machine, cooling air at the extrusion tool
- textile industry, steam soaking: steam iron, industrial ironing machine, smoothing iron
- air supply: UV dryer, IR dryer
- bus, utility vehicle, caravan/ trailer, mobile home/ camper/ RV, boat, ship/ vessel/ marine, yacht: ventilation, heating
- compressor, side channel blower, vacuum pump, pressure pump, pump
- paper mill, paper and pulp industry: waste water, air extraction
- heating system/ heater: fresh air supply

## Properties

- medium-heavy duty
- very good heat resistance
- good resistance to oil, gasoline, and chemicals
- good resistance to alkalis and acids
- conforms to RoHS guideline
- REACH according to --> Technology / Technical Information / REACH

## Temperature range

- 40°F to 255°F
- short time to 300°F

## Design

- AIRDUC® profile hose
- spring steel wire firmly embedded in wall
- Wall: thermoplastic rubber (TPE) (US version: antistatic thermoplastic rubber)
- wall thickness 0.03 in approx.

## Delivery variants

- further diameters and lengths available on request
- black (standard)
- special colors: full colored
- customer-specific branding

I.D.	outer Ø	Pressure	Vacuum	Bending radius	Weight	Dimensions in Stock	Production lengths	Order No.
(in / mm)	(in)	(psi)	(inHG)	(in)	(lb/ft)	(ft)	(ft)	
<b>standard</b>								
- / 30	1.496	13.489	5.758	0.906	0.141	-	25 50	363-0030-0000
1,25 / 32	1.575	12.618	5.611	0.945	0.168	<b>25 50</b>	-	363-0032-0000
1,5 / 38	1.811	10.733	5.168	1.063	0.195	<b>25 50</b>	-	363-0038-0000
- / 40	1.890	10.225	5.020	1.102	0.202	-	25 50	363-0040-0000
1,75 / 44-45	2.087	9.138	4.725	1.220	0.222	<b>25 50</b>	-	363-0045-0000
2 / 50-51	2.283	8.195	4.430	1.299	0.249	<b>25 50</b>	-	363-0050-0000
2,36 / 60	2.677	6.889	3.396	1.496	0.302	-	25 50	363-0060-0000
2,5 / 63-65	2.874	6.382	2.953	1.614	0.329	<b>25 50</b>	-	363-0065-0000
- / 70	3.071	5.947	2.510	1.693	0.356	-	25 50	363-0070-0000
3 / 75-76	3.268	5.512	2.362	1.811	0.376	<b>25 50</b>	-	363-0075-0000
- / 80	3.465	5.221	2.067	1.890	0.397	-	25 50	363-0080-0000
3,5 / 89-90	3.858	4.641	1.919	2.087	0.450	<b>25 50</b>	-	363-0090-0000
4 / 100-102	4.252	4.206	1.477	2.283	0.497	<b>25 50</b>	-	363-0100-0000
- / 110	4.646	3.771	1.329	2.480	0.544	-	25 50	363-0110-0000
5 / 125-127	5.236	3.336	1.034	2.795	0.612	<b>25 50</b>	-	363-0125-0000
- / 130	5.433	3.191	1.034	2.874	0.638	-	25 50	363-0130-0000
6 / 150-152	6.220	2.828	1.034	3.268	0.739	<b>25 50</b>	-	363-0150-0000
7 / 178-180	7.402	2.321	0.738	3.858	0.867	<b>25 50</b>	-	363-0180-0000
8 / 200-203	8.189	2.103	0.738	4.252	0.968	<b>25 50</b>	-	363-0200-0000
- / 225	9.173	1.886	0.591	4.764	1.095	-	25 50	363-0225-0000
- / 250	10.157	1.668	0.591	5.236	1.216	-	25 50	363-0250-0000

Positive and negative pressure ratings are the recommended maximum operating values. Products can be manufactured to meet higher operating values upon request. The bend radius is calculated from the center of the hose in an arched position. Additional information at [www.norres.com/us/technology/](http://www.norres.com/us/technology/). NORRES reserves the right to modify technical data at any time. Technical data based on tests at 68°F and are approx. values. Proper use and maintenance of NORRES hoses is the sole responsibility of purchaser and ultimate user of the product. The individual conditions, applications and the number of variables make firm recommendations technically impossible. This information is intended as a general guide only.

# AIRDUC® TPE 363 (MD)

## Accessories



CLAMP 217



CONNECT 270-271



CONNECT 228



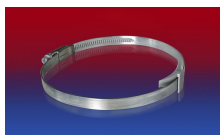
CLAMP 213



CLAMP 212



CONNECT 223



CLAMP 210 BRIDGE  
CLAMP