

Electrically conductive polyethylene hose, medium-heavy duty

Applications

- flexible hose/ ducting for gases and for dust, powder, fibers
- chemical industry: chemical vapors, vapor return hose at loading arm, paint steam, spray mist extraction
- explosion hazard area
- Coal mine, mine, tunnelling: ventilation, methane extraction

Properties

- medium-heavy duty
- good resistance to alkalis and acids

- extremely good resistance to chemicals
- electrically conductive wall: electrical and surface resistance $<10^3 \Omega$ (according to NFPA 652 $<10^6 \Omega$)
- in accordance with ATEX 2014/34/EU (1999/92/EC) and German TRGS 727: pneumatic transport of flammable dusts and bulk materials (Zone 20, 21, 22 inside), aspiration of combustible dusts (Zone 22 inside),
- in accordance with ATEX 2014/34/EU (1999/92/EC) and German TRGS 727: for conveying for flammable liquids (inside zone 0, 1, 2), for conveying for non-flammable liquids, for use in zone 1 and 2 (gases), for use in zone 0 (gases)
- conforms to RoHS guideline
- REACH according to --> Technology / Technical Information / REACH

Temperature range

- 30 °F to 175 °F

Design

- AIRDUC® profile hose
- spring steel wire firmly embedded in wall
- wall: electrically conductive polyethylene (PE)
- wall thickness 0.03 in approx.

Delivery variants

- further diameters and lengths available on request
- black (standard)

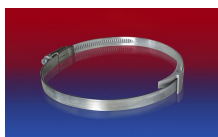
I.D.	outer Ø	Pressure	Vacuum	Bending radius	Weight	Dimensions in Stock	Production lengths	Order No.
(in / mm)	(in)	(psi)	(inHG)	(in)	(lb/ft)	(ft)	(ft)	
1,25 / 32	1.535	11.313	15.651	0.906	0.148	-	25	362-0032-1003
1,5 / 38	1.772	9.573	13.289	1.024	0.175	25	-	362-0038-1003
- / 40	1.850	9.138	12.550	1.063	0.181	-	25	362-0040-1003
2 / 50-51	2.244	7.325	10.040	1.260	0.222	25	-	362-0050-1003
2,36 / 60	2.638	6.164	8.711	1.457	0.269	-	25	362-0060-1003
- / 70	3.110	5.294	6.201	1.732	0.309	-	25	362-0070-1003
- / 80	3.504	4.641	5.463	1.929	0.349	-	25	362-0080-1003
3,5 / 89-90	3.898	4.134	4.872	2.126	0.397	25	-	362-0090-1003
4 / 100-102	4.291	3.699	4.282	2.323	0.511	25	-	362-0100-1003
5 / 125-127	5.276	2.973	3.544	2.835	0.632	25	-	362-0125-1003
5,5 / 140	5.866	2.683	3.101	3.110	0.712	25	-	362-0140-1003
6 / 150-152	6.260	2.466	2.953	3.307	0.759	25	-	362-0150-1003
6,3 / 160	6.654	2.321	2.658	3.504	0.813	-	25	362-0160-1003
8 / 200-203	8.268	1.886	2.215	4.331	1.015	25	-	362-0200-1003
- / 250	10.236	1.523	1.772	5.315	1.263	-	25	362-0250-1003
11 / 280	11.417	1.305	1.624	5.906	1.411	25	-	362-0280-1003
- / 300	12.205	1.233	1.477	6.299	1.519	-	25	362-0300-1003

Positive and negative pressure ratings are the recommended maximum operating values. Products can be manufactured to meet higher operating values upon request. The bend radius is calculated from the center of the hose in an arched position. Additional information at www.norres.com/us/technology/. NORRES reserves the right to modify technical data at any time. Technical data based on tests at 68 °F and are approx. values. Proper use and maintenance of NORRES hoses is the sole responsibility of purchaser and ultimate user of the product. The individual conditions, applications and the number of variables make firm recommendations technically impossible. This information is intended as a general guide only.

Accessories



CONNECT 270-271



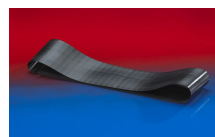
CLAMP 210 BRIDGE
CLAMP



CONNECT 223



CLAMP 217



CONNECT 228



CLAMP 212



CLAMP 213



CLAMP 212 EC