

Antistatic food hose and pharmaceutical hose, super-heavy, stainless steel (INOX)

Applications

- hose/ ducting for high throughput of extremely abrasive bulk material, granulate and stone
- food industry, pharmaceutical industry: foodstuff, pharmaceutical
- conveying of dry foods e.g. rice, cereals, sugar, milk powder, powders, coffee, tea, grains, flour, frozen foods
- vacuum conveying equipment, vacuum hopper, suction conveyor, dosing system
- pelleting machines/ tablet presses
- agricultural industry: pneumatic grain conveyor
- mixer, dryer, packaging machine, bulk-bag (big bag)-charging and discharging, mill
- animal stall, animal shed: feedstuff conveying, feedstuff plant, animal feed transport
- paper mill, paper and pulp industry: waste water, air extraction
- silos and tankers: silo charging, silo discharging

Properties

- super heavy-duty

- extremely abrasion-resistant with reinforcement underneath wire and narrow hose pitch
- very high pressure, vacuum and compression resistance
- Approved by an independent testing laboratory for the complete hose acc. to EU-Directive 10/2011, EC 1935/2004 and EU 2015/174, food grade polyurethane, complies with: FDA 21 CFR 177.2600
- Approval acc. to EU-Directive 10/2011 (food simulant E) and EC 1935/2004
- odourless and tasteless
- microbe and hydrolysis resistant
- good resistance to oil, gasoline and chemicals
- very good low temperature flexibility
- Permanently antistatic wall: according to ISO 8031 electrical and surface resistance $<10^9 \Omega$ (according to TRGS 727 $<2,5 \cdot 10^8 \Omega \cdot m$ and NFPA 652 $10^8-10^9 \Omega$)
- in accordance with ATEX 2014/34/EU (1999/92/EC) and German TRGS 727: pneumatic transport of flammable dusts and bulk materials (Zone 20, 21, 22 inside), aspiration of combustible dusts (Zone 22 inside),
- in accordance with ATEX 2014/34/EU (1999/92/EC) and German TRGS 727: for conveying for flammable liquids (inside zone 0, 1, 2), for conveying for non-flammable liquids, for use in zone 1 and 2 (gases), for use in zone 0 (gases)
- according to DIN 26057 Type 4
- manufacturing process acc. GMP EC 2023/2006

- conforms to RoHS guideline
- REACH according to --> Technology / Technical Information / REACH

Temperature Range

- -40°C to 90°C

Design

- AIRDUC® profile hose
- spring steel wire firmly embedded in wall
- spiral: stainless steel wire (INOX)
- wall: permanently antistatic premium ether-polyurethane (Pre-PUR®)
- wall thickness 2,0 to 2,5 mm approx.
- reinforcement of the primary abrasion areas

Delivery variants

- further diameters and lengths available on request
- transparent (standard)
- customer-specific branding

I.D.	outer Ø	Pressure	Vacuum	Bending Radius	Weight	Dimensions in Stock	Production Lengths	Order No.
(in / mm)	(mm)	(bar)	(bar)	(mm)	(kg/m)	(m)	(m)	
1,25 / 32	43.00	5,180	1,000	90.00	0.68	10	5	356-0032-1018
1,5 / 38	49.00	4,425	1,000	104.00	0.79	-	10	356-0038-1018
- / 40	51.00	4,225	1,000	109.00	0.82	10	5	356-0040-1018
- / 50	61.00	3,430	1,000	134.00	1.00	10	5	356-0050-1018
2 / 51	62.00	3,155	1,000	134.00	1.02	-	10	356-0051-1018
2,36 / 60	71.00	2,890	1,000	156.00	1.18	10	5	356-0060-1018
2,5 / 63-65	74.00	2,780	1,000	163.00	1.23	10	5	356-0063-1018
- / 65	76.00	2,675	1,000	169.00	1.27	10	5	356-0065-1018
- / 70	82.00	2,495	1,000	186.00	1.37	-	10	356-0070-1018

Overpressure and underpressure are recommended threshold operating values, products can be subjected to higher loads upon request. The bending radius is measured through the inside of the hose arch. The right to make technical modifications is reserved. All values determined at 20°C and are approx. data. Additional information at www.norres.com/en/technology/.

I.D.	outer Ø	Pressure	Vacuum	Bending Radius	Weight	Dimensions in Stock	Production Lengths	Order No.
(in / mm)	(mm)	(bar)	(bar)	(mm)	(kg/m)	(m)	(m)	
- / 75	87.00	2,335	1,000	195.00	1.46	10	5	356-0075-1018
3 / 76	88.00	2,330	1,000	195.00	1.48	10	5	356-0076-1018
- / 80	92.00	2,195	1,000	205.00	1.55	10	5	356-0080-1018
3,5 / 89-90	101.00	2,170	1,000	250.00	1.70	5	10	356-0089-1018
- / 90	103.00	2,170	1,000	250.00	2.06	10	5	356-0090-1018
- / 100	113.00	1,960	1,000	272.00	2.27	10	5	356-0100-1018
4 / 102	115.00	1,890	1,000	272.00	2.31	10	5	356-0102-1018
- / 125	138.00	1,580	0,880	336.00	2.80	-	5 10	356-0125-1018
5 / 127	140.00	1,450	0,870	336.00	2.85	-	5 10	356-0127-1018
- / 150	163.00	1,320	0,735	435.00	3.68	-	5	356-0150-1018
6 / 152	165.00	1,375	0,725	435.00	3.73	-	5 10	356-0152-1018

Accessories



CONNECT 243
FOOD



CONNECT 228



CONNECT MOULD
ASSEMBLY 233



CONNECT THREAD
FITTING 234



CLAMP 211

CONNECT 240 + 241
FOOD



CONNECT SAFETY
CLAMP ASSEMBLY
231



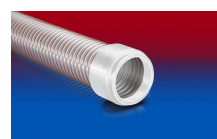
CONNECT 246
FOOD



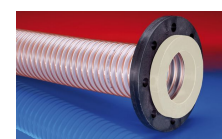
CLAMP 216



CONNECT PRESS
ASSEMBLY 232



CONNECT 245
FOOD



CONNECT 244
FOOD