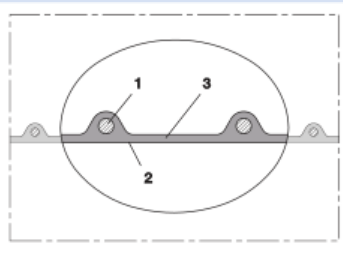
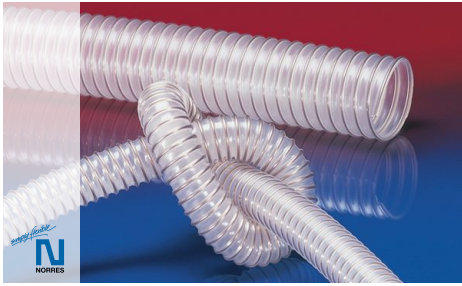


AIRDUC® PUR 350 AS (MD)



Antistatic polyurethane hose, medium-heavy duty, microbe resistant, flame-resistant

Applications

- flexible hose/ ducting for abrasive powder, bulk material, granulate and for gases
- printed circuit board drilling machines (PCB)
- offset printing machine: air supply, air supply cabinet
- air supply: UV dryer, IR dryer
- extraction unit, dust collection systems, filter system, oil mist extraction
- chemical industry: chemical vapors, vapor return hose at loading arm, paint steam, spray mist extraction
- explosion hazard area
- textile industry, fiber extraction: spinning machine, knitting machine, weaving loom machine
- animal stall, animal shed: barn ventilation
- clean room ventilation, semiconductor production machine
- compressor, side channel blower, vacuum pump, pressure pump, pump
- surface preparation: shot blasting/ sand blasting recovery (blasting chamber), ship yard, stripping machine, flooring preparation machine, grinding machine
- municipal vehicle: sweeper, sweeping machine

- municipal vehicle: lawn mower, slope mower, leaf blower/ leaf collector
- scrubber, floor cleaning machine
- heating hose: exterior hose as protection hose

Properties

- highly abrasion resistant
- medium-heavy duty
- microbe resistant
- good resistance to oil, gasoline, and chemicals
- very good low temperature flexibility
- flame-retardant according to: UL94-V2
- Permanently antistatic wall: according to ISO 8031 electrical and surface resistance $<10^9 \Omega$ (according to TRGS 727 $<2,5 \cdot 10^8 \Omega \cdot m$ and NFPA 652 $10^8-10^9 \Omega$)
- in accordance with ATEX 2014/34/EU (1999/92/EC) and German TRGS 727: pneumatic transport of flammable dusts and bulk materials (Zone 20, 21, 22 inside), aspiration of combustible dusts (Zone 22 inside),
- in accordance with ATEX 2014/34/EU (1999/92/EC) and German TRGS 727: for conveying for flammable liquids (inside zone 0, 1, 2), for conveying for non-flammable liquids, for use in zone 1 and 2 (gases), for use in zone 0 (gases)
- conforms to the safety regulations of the German Wood Trade Association

- according to DIN 26057 Type 2
- conforms to RoHS guideline
- REACH according to --> Technology / Technical Information / REACH

Temperature range

- 40 °F to 195 °F
- short time to 255 °F

Design

- AIRDUC® profile hose
- spring steel wire firmly embedded in wall
- wall: permanently antistatic premium ester-polyurethane (Pre-PUR®)
- wall thickness 0.0275 in approx.

Delivery variants

- further diameters and lengths available on request
- transparent (standard)
- special colors: full colored
- customer-specific branding

I.D.	outer Ø	Pressure DIN 26057 (50% Elongation)	Vacuum DIN 26057 (axially fixed)	Bending radius	Weight	Dimensions in Stock	Production lengths	Order No.
(in / mm)	(in)	(psi)	(inHG)	(in)	(lb/ft)	(ft)	(ft)	
1 / 25	1.260	35.462 (79.047)	22.295 (29.530)	0.906	0.134	25 50	-	350-0025-1002
- / 30	1.457	29.806 (66.283)	18.604 (29.530)	1.024	0.161	-	25 50	350-0030-1002
1,25 / 32	1.535	27.993 (62.222)	17.423 (29.530)	1.063	0.168	-	25 50	350-0032-1002
1,5 / 38	1.772	23.714 (52.795)	14.617 (29.530)	1.220	0.195	25 50	-	350-0038-1002
- / 40	1.850	22.554 (50.184)	13.879 (29.530)	1.260	0.202	-	25 50	350-0040-1002
1,75 / 44-45	2.047	20.161 (44.672)	12.403 (29.530)	1.378	0.228	-	25 50	350-0045-1002
2 / 50-51	2.244	18.130 (40.321)	11.221 (29.530)	1.496	0.255	25 50	-	350-0050-1002
- / 55	2.441	16.535 (36.695)	10.188 (29.235)	1.614	0.276	-	25 50	350-0055-1002
2,36 / 60	2.638	15.229 (33.794)	9.302 (24.510)	1.732	0.302	-	25 50	350-0060-1002
2,5 / 63-65	2.756	14.069 (31.184)	8.564 (20.966)	1.850	0.323	25 50	-	350-0065-1002
- / 70	3.031	13.054 (29.008)	5.463 (24.510)	1.969	0.343	-	25 50	350-0070-1002
3 / 75-76	3.228	12.183 (27.122)	5.168 (21.262)	2.087	0.370	25 50	-	350-0075-1002

Positive and negative pressure ratings are the recommended maximum operating values. Products can be manufactured to meet higher operating values upon request. The bend radius is calculated from the center of the hose in an arched position. Additional information at www.norres.com/us/technology/. NORRES reserves the right to modify technical data at any time. Technical data based on tests at 68 °F and are approx. values. Proper use and maintenance of NORRES hoses is the sole responsibility of purchaser and ultimate user of the product. The individual conditions, applications and the number of variables make firm recommendations technically impossible. This information is intended as a general guide only.

AIRDUC® PUR 350 AS (MD)

I.D.	outer Ø	Pressure DIN 26057 (50% Elongation)	Vacuum DIN 26057 (axially fixed)	Bending radius	Weight	Dimensions in Stock	Production lengths	Order No.
(in / mm)	(in)	(psi)	(inHG)	(in)	(lb/ft)	(ft)	(ft)	
- / 80	3.425	11.458 (25.382)	4.725 (18.899)	2.205	0.390	-	25 50	350-0080-1002
3,5 / 89-90	3.819	10.225 (22.626)	4.282 (15.060)	2.441	0.437	25 50	-	350-0090-1002
4 / 100-102	4.213	9.210 (20.451)	3.987 (19.490)	2.677	0.571	25 50	-	350-0100-1002
- / 110	4.606	8.340 (18.565)	3.691 (16.242)	2.913	0.625	-	25 50	350-0110-1002
4,5 / 114-115	4.803	7.977 (17.695)	3.544 (14.765)	3.031	0.652	25 50	-	350-0115-1002
4,72 / 120	5.000	7.687 (16.970)	3.396 (13.584)	3.150	0.672	-	25 50	350-0120-1002
5 / 125-127	5.197	7.397 (16.390)	3.248 (12.403)	3.268	0.706	25 50	-	350-0125-1002
- / 130	5.394	7.107 (15.664)	3.101 (11.517)	3.386	0.733	-	25 50	350-0130-1002
5,5 / 140	5.787	6.599 (14.649)	2.805 (9.745)	3.622	0.786	25 50	-	350-0140-1002
6 / 150-152	6.181	6.164 (13.634)	2.215 (10.631)	3.858	0.860	25 50	-	350-0150-1002
6,3 / 160	6.575	5.802 (12.764)	2.067 (9.154)	4.094	0.907	-	25 50	350-0160-1002
- / 170	6.969	5.439 (12.038)	1.919 (8.268)	4.252	0.974	-	25 50	350-0170-1002
- / 175	7.165	5.294 (11.748)	1.919 (7.678)	4.449	1.001	-	25 50	350-0175-1002
7 / 178-180	7.362	5.149 (11.313)	1.772 (7.087)	4.567	1.028	25 50	-	350-0180-1002
8 / 200-203	8.150	4.641 (10.298)	1.624 (5.611)	5.039	1.142	25	-	350-0200-1002
- / 225	9.134	4.134 (9.138)	1.477 (4.430)	5.630	1.277	-	25	350-0225-1002
- / 250	10.118	3.699 (8.267)	1.329 (3.544)	6.220	1.418	-	25	350-0250-1002
10 / 254	10.276	3.626 (8.122)	1.329 (3.248)	6.299	1.438	25	-	350-0254-1002
- / 275	11.102	3.336 (7.397)	1.181 (2.658)	6.811	1.559	-	25	350-0275-1002
11 / 280	11.299	3.336 (7.397)	1.181 (2.658)	6.929	1.586	25	-	350-0280-1002
- / 300	12.087	3.118 (6.817)	1.034 (2.362)	7.402	1.694	-	25	350-0300-1002
12 / 305	12.283	3.046 (6.672)	1.034 (2.067)	7.520	1.727	25	-	350-0305-1002
- / 315	12.677	2.973 (6.527)	1.034 (2.067)	7.756	1.781	-	25	350-0315-1002
- / 350	14.055	2.683 (5.802)	0.886 (1.477)	8.583	1.976	-	25	350-0350-1002
14 / 356	14.291	2.611 (5.802)	0.886 (1.772)	8.740	2.016	25	-	350-0356-1002
- / 400	16.024	2.321 (5.076)	0.886 (1.477)	9.764	2.560	25	-	350-0400-1002
- / 450	17.992	2.031 (4.641)	0.738 (1.181)	11.063	2.876	-	25	350-0450-1002

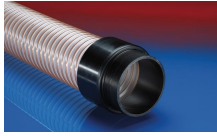
Positive and negative pressure ratings are the recommended maximum operating values. Products can be manufactured to meet higher operating values upon request. The bend radius is calculated from the center of the hose in an arched position. Additional information at www.norres.com/us/technology/. NORRES reserves the right to modify technical data at any time. Technical data based on tests at 68 °F and are approx. values. Proper use and maintenance of NORRES hoses is the sole responsibility of purchaser and ultimate user of the product. The individual conditions, applications and the number of variables make firm recommendations technically impossible. This information is intended as a general guide only.

AIRDUC® PUR 350 AS (MD)

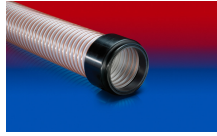
Accessories



CONNECT 240 EC



CONNECT 242



CONNECT 245



CLAMP 213



CONNECT 243



CLAMP 217



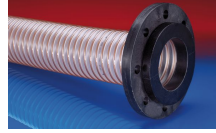
CONNECT ASEPTIC
FITTING 249



CONNECT THREAD
FITTING 234



CONNECT 240 + 241
AS



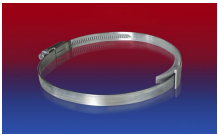
CONNECT 244



CONNECT 223



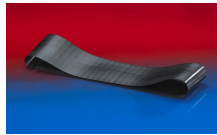
CLAMP 212



CLAMP 210 BRIDGE
CLAMP



CONNECT 246 AS



CONNECT 228



CONNECT MOULD
ASSEMBLY 233



CONNECT TRI-
CLAMP FITTING 245



CONNECT DAIRY
FITTING 247



CONNECT 270-271