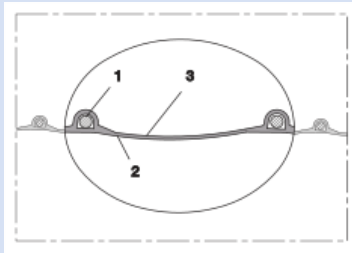
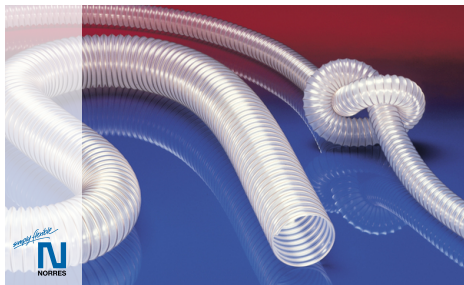


# PROTAPE® PUR 332 SE (LD)



Suction hose and pressure hose according to DIN 4102-B1, light weight

## Applications

- flexible hose/ ducting for gases and for abrasive dust, powder, fibers
- rail vehicle, train, railway, tram, boat, ship/ vessel, yacht: ventilation, heating, roof drainage, sand conveying in rail vehicle braking systems, sanitary installation

## Properties

- lightweight
- highly flexible + compressible 3:1
- abrasion-resistant
- microbe and hydrolysis resistant

- good resistance to oil, gasoline, and chemicals
- flame-retardant according to: DIN 4102-B1, FMVSS 302
- conforms to RoHS guideline
- REACH according to --> Technology / Technical Information / REACH

## Temperature range

- 40°F to 195°F
- short time to 255°F

## Design

- PROTAPE® tape hose
- spring steel wire integrated in wall
- extruded tape
- wall: special premium polyurethane with flame retardant additive (Pre-PUR®)
- wall thickness 0.025 in approx.

## Delivery variants

- further diameters and lengths available on request
- transparent (standard)
- special colors: partially colored, completely colored
- customer-specific branding

I.D.	outer Ø	Pressure	Vacuum	Bending radius	Weight	Production lengths	Order No.
(in / mm)	(in)	(psi)	(inHG)	(in)	(lb/ft)	(ft)	
- / 40	1.850	14.722	8.859	1.850	0.175	25 50	332-0040-0000
2 / 50-51	2.283	11.821	7.678	2.283	0.242	25 50	332-0050-0000
2,5 / 63-65	2.874	9.138	5.315	2.874	0.316	25 50	332-0065-0000

## Accessories



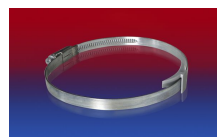
CONNECT 223



CLAMP 217



CLAMP 213



CLAMP 210 BRIDGE CLAMP



CLAMP 212



CONNECT 270-271

Positive and negative pressure ratings are the recommended maximum operating values. Products can be manufactured to meet higher operating values upon request. The bend radius is calculated from the center of the hose in an arched position. Additional information at [www.norres.com/us/technology/](http://www.norres.com/us/technology/). NORRES reserves the right to modify technical data at any time. Technical data based on tests at 68°F and are approx. values. Proper use and maintenance of NORRES hoses is the sole responsibility of purchaser and ultimate user of the product. The individual conditions, applications and the number of variables make firm recommendations technically impossible. This information is intended as a general guide only.