

Suction hose and pressure hose according to DIN 4102-B1, light

## Applications

- flexible hose/ ducting for gases and for abrasive dust, powder, fibres
- rail vehicle, train, railway, tram, boat, ship/ vessel, yacht: ventilation, heating, roof drainage, sand conveying in rail vehicle braking systems, sanitary installation

## Properties

- lightweight
- highly flexible + compressible 3:1
- abrasion-resistant
- microbe and hydrolysis resistant

- good resistance to oil, gasoline and chemicals
- flame-retardant according to: DIN 4102-B1, FMVSS 302
- conforms to RoHS guideline
- REACH according to --> Technology / Technical Information / REACH

## Temperature Range

- 40°C to 90°C
- short time to 125°C

## Design

- PROTAPE® tape hose
- spring steel wire integrated in wall
- extruded tape
- wall: special premium polyurethane with flame retardant additive (Pre-PUR®)
- wall thickness 0,6 mm approx.

## Delivery variants

- further diameters and lengths available on request
- transparent (standard)
- special colours: partially coloured, completely coloured
- customer-specific branding

I.D.	outer Ø	Pressure	Vacuum	Bending Radius	Weight	Production Lengths	Order No.
(in / mm)	(mm)	(bar)	(bar)	(mm)	(kg/m)	(m)	
- / 40	47.00	1,015	0,300	47.00	0.26	15	332-0040-0000
2,5 / 63-65	73.00	0,630	0,180	73.00	0.47	10 15	332-0065-0000

## Accessories



CONNECT 223



CONNECT 270-271



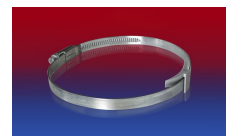
CLAMP 213



CLAMP 212



CLAMP 217



CLAMP 210 BRIDGE CLAMP