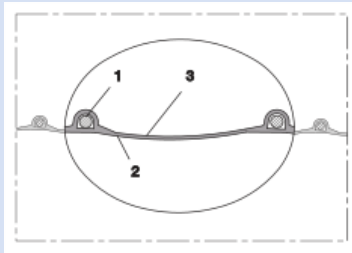
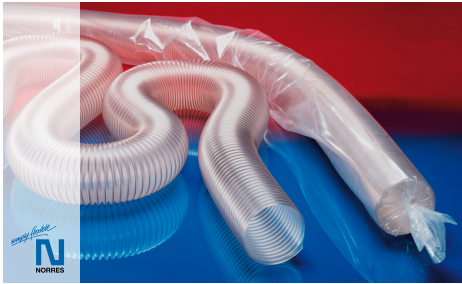


PROTAPE® PUR 331 FOOD (XLD)



Food hose and pharmaceutical hose, super-light weight

Applications

- flexible hose/ ducting for gases and for abrasive dust, powder, fibers
- food industry, pharmaceutical industry: food, pharmaceutical
- conveying of dry foods e.g. rice, cereals, sugar, milk powder, powders, coffee, tea, grains, flour, frozen foods
- mixer, dryer, packaging machine, bulk-bag (big bag)-charging and discharging, mill
- extraction unit, dust collection systems, filter system, oil mist extraction

Properties

- super-light weight
- highly flexible + compressible 3:1

- abrasion-resistant
- Approved by an independent testing laboratory for the complete hose acc. to EU-Directive 10/2011, EC 1935/2004 and EU 2015/174, food grade polyurethane, complies with: FDA 21 CFR 177.2600
- Approval acc. to EU-Directive 10/2011 (food simulants A, B, C or E and D2) and EC 1935/2004
- microbe and hydrolysis resistant
- odorless and tasteless
- good resistance to oil, gasoline, and chemicals
- conforms to RoHS guideline
- REACH according to --> Technology / Technical Information / REACH

Temperature range

- 40 °F to 195 °F
- short time to 255 °F

Design

- PROTAPE® tape hose
- spring steel wire integrated in wall
- wall: special premium ether-polyurethane (Pre-PUR®)
- wall thickness 0.015 in approx.

Delivery variants

- further diameters and lengths available on request
- transparent (standard)
- customer-specific branding

I.D. (in / mm)	outer Ø (in)	Pressure DIN 26057 (50% Elongation) (psi)	Vacuum DIN 26057 (axially fixed) (inHG)	Bending radius (in)	Weight (lb/ft)	Dimensions in Stock (ft)	Production lengths (ft)	Order No.
-------------------	-----------------	---	--	---------------------------	-------------------	--------------------------------	-------------------------------	-----------

standard

2 / 50-51	2.303	6.962 (20.596)	5.020 (25.101)	1.299	0.181	-	25 50	331-0050-0000
2,36 / 60	2.677	5.874 (17.260)	4.282 (17.423)	1.496	0.215	-	25 50	331-0060-0000
3 / 75-76	3.287	4.714 (13.779)	3.396 (11.517)	1.772	0.269	-	25 50	331-0075-0000
- / 80	3.465	4.424 (12.909)	3.248 (10.040)	1.890	0.282	-	25 50	331-0080-0000
4 / 100-102	4.311	3.553 (10.298)	1.624 (8.859)	2.283	0.329	-	25 50	331-0100-0000
6 / 150-152	6.280	2.321 (6.962)	1.034 (3.839)	3.268	0.571	-	25 50	331-0150-0000
6,3 / 160	6.614	2.176 (6.527)	1.034 (3.544)	3.465	0.605	-	25 50	331-0160-0000

Special type DB.PLA: Polyurethane food safe according to FDA, no approval according to EU regulation for the entire hose, stocked only in Italy

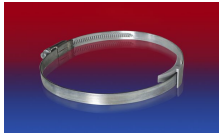
2 / 50-51	2.323	12.488	14.735	1.181	0.168	-	25 50	331-0050-5020
2,36 / 60	2.677	10.428	12.314	1.417	0.202	-	25 50	331-0060-5020
- / 70	3.071	8.949	10.572	1.654	0.242	-	25 50	331-0070-5020
3 / 75-76	3.307	8.369	9.863	1.772	0.255	-	25 50	331-0075-5020
- / 80	3.465	7.847	10.070	1.890	0.276	-	25 50	331-0080-5020
3,5 / 89-90	3.858	6.976	8.239	2.087	0.296	-	25 50	331-0090-5020
4 / 100-102	4.291	6.295	7.412	2.362	0.309	-	25 50	331-0100-5020
- / 110	4.646	5.715	6.762	2.598	0.336	-	25 50	331-0110-5020
4,72 / 120	5.039	5.250	6.201	2.835	0.363	-	25 50	331-0120-5020
5 / 125-127	5.276	5.033	5.936	2.953	0.397	-	25 50	331-0125-5020
- / 130	5.433	4.844	5.729	3.071	0.430	-	25 50	331-0130-5020
5,5 / 140	5.827	4.496	5.315	3.307	0.450	-	25 50	331-0140-5020

Positive and negative pressure ratings are the recommended maximum operating values. Products can be manufactured to meet higher operating values upon request. The bend radius is calculated from the center of the hose in an arched position. Additional information at www.norres.com/us/technology/. NORRES reserves the right to modify technical data at any time. Technical data based on tests at 68 °F and are approx. values. Proper use and maintenance of NORRES hoses is the sole responsibility of purchaser and ultimate user of the product. The individual conditions, applications and the number of variables make firm recommendations technically impossible. This information is intended as a general guide only.

PROTAPE® PUR 331 FOOD (XLD)

I.D.	outer Ø	Pressure DIN 26057 (50% Elongation)	Vacuum DIN 26057 (axially fixed)	Bending radius	Weight	Dimensions in Stock	Production lengths	Order No.
(in / mm)	(in)	(psi)	(inHG)	(in)	(lb/ft)	(ft)	(ft)	
6 / 150-152	6.260	4.206	4.961	3.543	0.477	-	25 50	331-0150-5020
6,3 / 160	6.654	3.945	4.666	3.780	0.511	-	25 50	331-0160-5020
7 / 178-180	7.441	3.510	4.134	4.213	0.544	-	25 50	331-0180-5020
8 / 200-203	8.307	3.162	3.721	4.724	0.638	-	25 50	331-0200-5020
- / 225	9.213	2.799	3.307	5.315	0.699	-	25 50	331-0225-5020
- / 250	10.236	2.524	2.983	5.906	0.759	-	25	331-0250-5020
- / 300	12.205	2.103	2.481	7.087	1.042	-	25	331-0300-5020
- / 350	14.173	1.813	2.126	8.268	1.223	-	25	331-0350-5020
- / 400	16.142	1.581	1.860	9.449	1.411	-	25	331-0400-5020
- / 450	18.110	1.407	1.654	10.630	1.620	-	25	331-0450-5020

Accessories



CLAMP 210 BRIDGE
CLAMP



CLAMP 213



CONNECT 223



CONNECT 270-271



CLAMP 217



CLAMP 212

Positive and negative pressure ratings are the recommended maximum operating values. Products can be manufactured to meet higher operating values upon request. The bend radius is calculated from the center of the hose in an arched position. Additional information at www.norres.com/us/technology/. NORRES reserves the right to modify technical data at any time. Technical data based on tests at 68 °F and are approx. values. Proper use and maintenance of NORRES hoses is the sole responsibility of purchaser and ultimate user of the product. The individual conditions, applications and the number of variables make firm recommendations technically impossible. This information is intended as a general guide only.