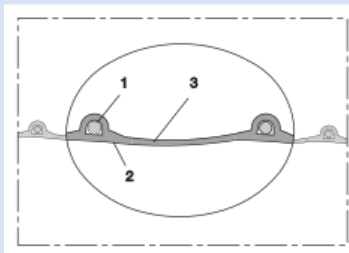
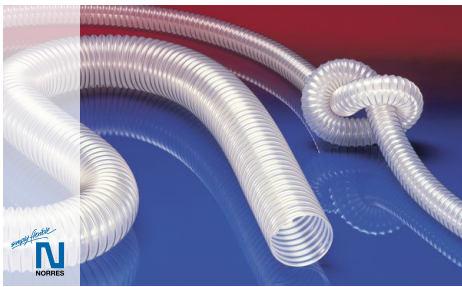


# PROTAPE® PUR 330 AS (LD)



Antistatic polyurethane hose, light, microbe resistant + flame-resistant

## Applications

- flexible hose/ ducting for gases and for abrasive dust, powder, fibres
- printed circuit board drilling machine (PCB)
- extraction unit, dedusting system, filter system, oil mist extraction
- extraction arm
- chemical industry: chemical vapours, vapour return hose at loading arm, paint steam, spray mist extraction
- explosion hazard area
- animal stall, animal shed: barn ventilation
- clean room ventilation, semiconductor production machine
- surface preparation: shot blasting/ sand blasting recovery e.g. at blasting chamber, ship yard, stripping machine, flooring preparation machine, grinding machine
- heating hose: exterior hose as protection hose

## Properties

- lightweight and reinforced
- highly flexible + compressible 3:1
- abrasion-resistant
- microbe resistant
- good resistance to oil, gasoline and chemicals
- very good low temperature flexibility
- flame-retardant according to: DIN 4102-B1
- flame-retardant according to: UL94-HB
- Permanently antistatic wall: according to ISO 8031 electrical and surface resistance  $<10^9 \Omega$  (according to NFPA 652  $10^8$ - $10^9 \Omega$ )
- in accordance with ATEX 2014/34/EU (1999/92/EC) and German TRGS 727: aspiration of combustible dust (zone 22 inside), for conveying of non-flammable liquids, for use in zone 1 and 2 (gases)
- conforms to the safety regulations of the German Wood Trade Association
- conforms to RoHS guideline

- REACH according to --> Technology / Technical Information / REACH

## Temperature Range

- 40°C to 90°C
- short time to 125°C

## Design

- PROTAPE® tape hose
- spring steel wire integrated in wall
- wall: permanently antistatic premium ester-polyurethane (Pre-PUR®)
- wall thickness 0,6 mm approx.

## Delivery variants

- further diameters and lengths available on request
- transparent (standard)
- special colours: partially coloured, completely coloured
- customer-specific branding

I.D.	outer Ø	Pressure DIN 26057 (50% Elongation)	Vacuum DIN 26057 (axially fixed)	Bending Radius	Weight	Minimum Quantity	Dimensions in Stock	Production Lengths	Order No.
(in / mm)	(mm)	(bar)	(bar)	(mm)	(kg/m)	(m)	(m)	(m)	
<b>standard</b>									
1 / 25	30.00	1,605 (4,18)	0,540 (1,00)	20.00	0.15	-	<b>10</b>	5 15	330-0025-1002
- / 30	35.00	1,350 (3,50)	0,450 (1,00)	22.00	0.18	-	<b>10</b>	5 15	330-0030-1002
1,25 / 32	37.00	1,265 (3,29)	0,420 (1,00)	23.00	0.19	-	<b>10</b>	5 15	330-0032-1002
1,5 / 38	43.00	1,075 (2,78)	0,355 (0,77)	26.00	0.22	-	<b>10</b>	5 15	330-0038-1002
- / 40	48.00	1,020 (2,64)	0,335 (0,69)	27.00	0.23	-	<b>10</b>	5 15	330-0040-1002
2 / 50-51	59.00	0,820 (2,12)	0,220 (0,87)	33.00	0.37	-	<b>10 15</b>	5	330-0050-1002
2,36 / 60	68.00	0,685 (1,77)	0,180 (0,61)	38.00	0.43	-	<b>10 15</b>	5	330-0060-1002
2,5 / 63-65	73.00	0,635 (1,64)	0,165 (0,52)	41.00	0.46	-	<b>10</b>	5 15	330-0065-1002
- / 70	78.00	0,590 (1,52)	0,155 (0,45)	43.00	0.50	-	<b>10</b>	5 15	330-0070-1002
3 / 75-76	83.00	0,550 (1,42)	0,145 (0,40)	46.00	0.53	-	<b>10</b>	5 15	330-0075-1002
- / 80	88.00	0,515 (1,33)	0,135 (0,35)	48.00	0.57	-	<b>10 15</b>	5	330-0080-1002
3,5 / 89-90	98.00	0,460 (1,19)	0,120 (0,28)	53.00	0.63	-	<b>10</b>	5 15	330-0090-1002
4 / 100-102	110.00	0,415 (1,07)	0,080 (0,31)	58.00	0.67	-	<b>5 10 15</b>	-	330-0100-1002
- / 110	118.00	0,375 (0,97)	0,070 (0,26)	63.00	0.73	-	<b>10</b>	5 15	330-0110-1002
4,5 / 114-115	123.00	0,360 (0,93)	0,070 (0,24)	66.00	0.76	-	-	5 10 15	330-0115-1002
4,72 / 120	128.00	0,345 (0,89)	0,065 (0,22)	68.00	0.79	-	<b>10 15</b>	5	330-0120-1002
5 / 125-127	135.00	0,335 (0,86)	0,065 (0,20)	71.00	0.83	-	<b>10 15</b>	5	330-0125-1002

Overpressure and underpressure are recommended threshold operating values, products can be subjected to higher loads upon request. The bending radius is measured through the inside of the hose arch. The right to make technical modifications is reserved. All values determined at 20°C and are approx. data. Additional information at [www.norres.com/en/technology/](http://www.norres.com/en/technology/).

# PROTAPE® PUR 330 AS (LD)

I.D.	outer Ø	Pressure DIN 26057 (50% Elongation)	Vacuum DIN 26057 (axially fixed)	Bending Radius	Weight	Minimum Quantity	Dimensions in Stock	Production Lengths	Order No.
(in / mm)	(mm)	(bar)	(bar)	(mm)	(kg/m)	(m)	(m)	(m)	
- / 130	138.00	0,320 (0,82)	0,060 (0,19)	73.00	0.86	-	10	5 15	330-0130-1002
5,5 / 140	148.00	0,295 (0,76)	0,055 (0,16)	78.00	0.92	-	10 15	5	330-0140-1002
6 / 150-152	160.00	0,275 (0,71)	0,055 (0,14)	83.00	0.99	-	10 15	5	330-0150-1002
6,3 / 160	168.00	0,260 (0,67)	0,050 (0,12)	88.00	1.05	-	10 15	5	330-0160-1002
- / 170	178.00	0,245 (0,63)	0,045 (0,11)	93.00	1.11	-	10	5 15	330-0170-1002
7 / 178-180	188.00	0,230 (0,59)	0,045 (0,10)	98.00	1.17	-	10	5 15	330-0180-1002
8 / 200-203	210.00	0,210 (0,54)	0,030 (0,11)	108.00	1.33	-	10 15	5	330-0200-1002
- / 225	233.00	0,185 (0,48)	0,025 (0,09)	121.00	1.48	-	10	5	330-0225-1002
- / 250	258.00	0,165 (0,43)	0,025 (0,07)	133.00	1.64	-	10	5	330-0250-1002
10 / 254	262.00	0,165 (0,42)	0,025 (0,06)	135.00	1.66	-	-	5 10	330-0254-1002
11 / 280	288.00	0,150 (0,38)	0,020 (0,05)	148.00	1.83	-	10	5	330-0280-1002
- / 300	309.00	0,140 (0,36)	0,020 (0,05)	159.00	2.14	-	10	5	330-0300-1002
12 / 305	314.00	0,135 (0,35)	0,020 (0,05)	162.00	2.17	-	10	5	330-0305-1002
- / 315	324.00	0,135 (0,34)	0,020 (0,05)	167.00	2.24	-	10	5	330-0315-1002
- / 350	359.00	0,120 (0,31)	0,020 (0,04)	184.00	2.49	-	10	5	330-0350-1002
14 / 356	365.00	0,115 (0,30)	0,015 (0,03)	187.00	2.53	-	10	5	330-0356-1002
- / 400	409.00	0,105 (0,27)	0,015 (0,02)	209.00	2.84	-	10	5	330-0400-1002

## neutral imprint: <ID> antistatic + microbe resistant <neutral batch no.> / no cutting

1,5 / 38	43.00	1,075 (2,78)	0,355 (0,77)	26.00	0.22	-	10	-	330-0038-0007
2 / 50-51	59.00	0,820 (2,12)	0,220 (0,87)	33.00	0.37	-	10	-	330-0050-0007
2,36 / 60	68.00	0,685 (1,77)	0,180 (0,61)	38.00	0.43	-	10	-	330-0060-0007
2,5 / 63-65	73.00	0,635 (1,64)	0,165 (0,52)	41.00	0.46	-	10	-	330-0065-0007
3 / 75-76	83.00	0,550 (1,42)	0,145 (0,40)	46.00	0.53	-	10	-	330-0075-0007
- / 80	88.00	0,515 (1,33)	0,135 (0,35)	48.00	0.57	-	10	-	330-0080-0007
4 / 100-102	110.00	0,415 (1,07)	0,080 (0,31)	58.00	0.67	-	10	-	330-0100-0007
4,72 / 120	128.00	0,345 (0,89)	0,065 (0,22)	68.00	0.79	-	10	-	330-0120-0007
5 / 125-127	135.00	0,335 (0,86)	0,065 (0,20)	71.00	0.83	-	10	-	330-0125-0007
6 / 150-152	160.00	0,275 (0,71)	0,055 (0,14)	83.00	0.99	-	10	-	330-0150-0007
6,3 / 160	168.00	0,260 (0,67)	0,050 (0,12)	88.00	1.05	-	10	-	330-0160-0007
8 / 200-203	210.00	0,210 (0,54)	0,030 (0,11)	108.00	1.33	-	10	-	330-0200-0007
- / 250	258.00	0,165 (0,43)	0,025 (0,07)	133.00	1.64	-	10	-	330-0250-0007
- / 300	309.00	0,140 (0,36)	0,020 (0,05)	159.00	2.14	-	10	-	330-0300-0007

## more compressed packaging approx. 4:1, neutral imprint, no cutting, not flame-resistant acc. to DIN 4102-B1, not acc. to TRGS 727 and ATEX 2014/34/EU (1999/92/EC)<br>doesn't fulfil the safety regulations of the German Wood Trade Association

7 / 178-180	188.00	0,230 (0,59)	0,045 (0,10)	98.00	0.83	80	-	-	330-0180-2030
8 / 200-203	210.00	0,210 (0,54)	0,030 (0,11)	108.00	0.93	60	-	-	330-0200-2030
- / 250	256.00	0,165 (0,43)	0,025 (0,07)	133.00	1.14	50	-	-	330-0250-2030
- / 300	309.00	0,140 (0,36)	0,020 (0,05)	159.00	1.47	40	-	-	330-0300-2030

## Accessories



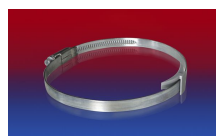
CONNECT 228



CONNECT 223



CLAMP 213



CLAMP 210 BRIDGE  
CLAMP



CLAMP 212



CONNECT 270-271  
CLAMP

Overpressure and underpressure are recommended threshold operating values, products can be subjected to higher loads upon request. The bending radius is measured through the inside of the hose arch. The right to make technical modifications is reserved. All values determined at 20°C and are approx. data. Additional information at [www.norres.com/en/technology/](http://www.norres.com/en/technology/).

# PROTAPE® PUR 330 AS (LD)



CLAMP 217

Overpressure and underpressure are recommended threshold operating values, products can be subjected to higher loads upon request. The bending radius is measured through the inside of the hose arch. The right to make technical modifications is reserved. All values determined at 20°C and are approx. data. Additional information at [www.norres.com/en/technology/](http://www.norres.com/en/technology/).