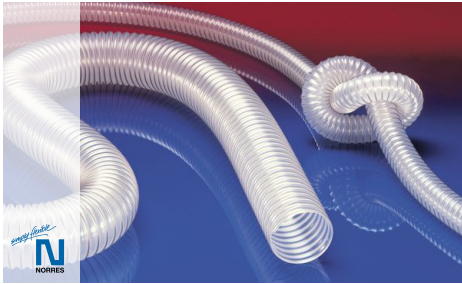


# PROTAPE® PUR 330 FOOD (LD)



Food hose and pharmaceutical hose, light weight

## Applications

- flexible hose/ ducting for gases and for abrasive dust, powder, fibers
- food industry, pharmaceutical industry: food, pharmaceutical
- conveying of dry foods e.g. rice, cereals, sugar, milk powder, powders, coffee, tea, grains, flour, frozen foods
- mixer, dryer, packaging machine, bulk-bag (big bag)-charging and discharging, mill
- extraction arm
- clean room ventilation, semiconductor production machine
- medical equipment/ medical technology, healthcare sector: cable protection conduit, air supply hose, extraction hose

## Properties

- lightweight and reinforced
- highly flexible + compressible 3:1

- abrasion-resistant
- Approved by an independent testing laboratory for the complete hose acc. to EU-Directive 10/2011, EC 1935/2004 and EU 2015/174, food grade polyurethane, complies with: FDA 21 CFR 177.2600
- Approval acc. to EU-Directive 10/2011 (food simulants A, B, C or E and D2) and EC 1935/2004
- odorless and tasteless
- microbe and hydrolysis resistant
- good resistance to oil, gasoline, and chemicals
- very good low temperature flexibility
- manufacturing process acc. GMP EC 2023/2006
- conforms to RoHS guideline
- REACH according to --> Technology / Technical Information / REACH

## Temperature range

- 40 °F to 195 °F
- short time to 255 °F

## Design

- PROTAPE® tape hose
- spring steel wire integrated in wall
- wall: special premium ether-polyurethane (Pre-PUR®)
- wall thickness 0.025 in approx.

## Delivery variants

- customer-specific branding
- further diameters and lengths available on request
- transparent (standard)

I.D.	outer Ø	Pressure DIN 26057 (50% Elongation)	Vacuum DIN 26057 (axially fixed)	Bending radius	Weight	Dimensions in Stock	Production lengths	Order No.
(in / mm)	(in)	(psi)	(inHG)	(in)	(lb/ft)	(ft)	(ft)	
1 / 25	1.260	23.279 (60.627)	15.946 (29.530)	0.787	0.101	25 50	-	330-0025-0000
- / 30	1.457	19.580 (50.764)	13.289 (29.530)	0.866	0.121	-	25 50	330-0030-0000
1,25 / 32	1.535	18.348 (47.718)	12.403 (29.530)	0.906	0.128	-	25 50	330-0032-0000
1,5 / 38	1.772	15.592 (40.321)	10.483 (22.738)	1.024	0.148	25 50	-	330-0038-0000
- / 40	1.850	14.794 (38.291)	9.893 (20.376)	1.063	0.155	-	25 50	330-0040-0000
1,75 / 44-45	2.047	13.199 (34.084)	8.859 (16.242)	1.181	0.175	-	25 50	330-0045-0000
2 / 50-51	2.283	11.893 (30.748)	6.497 (25.691)	1.299	0.249	25 50	-	330-0050-0000
2,36 / 60	2.677	9.935 (25.672)	5.315 (18.013)	1.496	0.289	-	25 50	330-0060-0000
2,5 / 63-65	2.874	9.210 (23.787)	4.872 (15.356)	1.614	0.309	25 50	-	330-0065-0000
- / 70	3.071	8.557 (22.046)	4.577 (13.289)	1.693	0.336	-	25 50	330-0070-0000
3 / 75-76	3.268	7.977 (20.596)	4.282 (11.812)	1.811	0.356	25 50	-	330-0075-0000
- / 80	3.465	7.470 (19.290)	3.987 (10.336)	1.890	0.383	25 50	-	330-0080-0000
3,5 / 89-90	3.858	6.672 (17.260)	3.544 (8.268)	2.087	0.423	25 50	-	330-0090-0000
4 / 100-102	4.252	6.019 (15.519)	2.362 (9.154)	2.283	0.450	25 50	-	330-0100-0000
- / 110	4.646	5.439 (14.069)	2.067 (7.678)	2.480	0.491	-	25 50	330-0110-0000
4,5 / 114-115	4.843	5.221 (13.489)	2.067 (7.087)	2.598	0.511	25 50	-	330-0115-0000
4,72 / 120	5.039	5.004 (12.909)	1.919 (6.497)	2.677	0.531	-	25 50	330-0120-0000
5 / 125-127	5.236	4.859 (12.473)	1.919 (5.906)	2.795	0.558	25 50	-	330-0125-0000
- / 130	5.433	4.641 (11.893)	1.772 (5.611)	2.874	0.571	-	25 50	330-0130-0000
5,5 / 140	5.827	4.279 (11.023)	1.624 (4.725)	3.071	0.618	25 50	-	330-0140-0000

Positive and negative pressure ratings are the recommended maximum operating values. Products can be manufactured to meet higher operating values upon request. The bend radius is calculated from the center of the hose in an arched position. Additional information at [www.norres.com/us/technology/](http://www.norres.com/us/technology/). NORRES reserves the right to modify technical data at any time. Technical data based on tests at 68 °F and are approx. values. Proper use and maintenance of NORRES hoses is the sole responsibility of purchaser and ultimate user of the product. The individual conditions, applications and the number of variables make firm recommendations technically impossible. This information is intended as a general guide only.

# PROTAPE® PUR 330 FOOD (LD)

I.D.	outer Ø	Pressure DIN 26057 (50% Elongation)	Vacuum DIN 26057 (axially fixed)	Bending radius	Weight	Dimensions in Stock	Production lengths	Order No.
(in / mm)	(in)	(psi)	(inHG)	(in)	(lb/ft)	(ft)	(ft)	
6 / 150-152	6.220	3.989 (10.298)	1.624 (4.134)	3.268	0.665	<b>25 50</b>	-	330-0150-0000
6,3 / 160	6.614	3.771 (9.718)	1.477 (3.544)	3.465	0.699	-	25 50	330-0160-0000
- / 170	7.008	3.553 (9.138)	1.329 (3.248)	3.661	0.746	-	25 50	330-0170-0000
- / 175	7.205	3.481 (8.847)	1.329 (2.953)	3.780	0.766	-	25 50	330-0175-0000
7 / 178-180	7.402	3.336 (8.557)	1.329 (2.953)	3.858	0.786	<b>25 50</b>	-	330-0180-0000
8 / 200-203	8.189	3.046 (7.832)	0.886 (3.248)	4.252	0.894	<b>25</b>	-	330-0200-0000
- / 225	9.173	2.683 (6.962)	0.738 (2.658)	4.764	0.988	-	25 50	330-0225-0000
- / 250	10.157	2.393 (6.237)	0.738 (2.067)	5.236	1.095	-	25	330-0250-0000
10 / 254	10.315	2.393 (6.092)	0.738 (1.772)	5.315	1.116	<b>25</b>	-	330-0254-0000
11 / 280	11.339	2.176 (5.512)	0.591 (1.477)	5.827	1.223	-	25	330-0280-0000
- / 300	12.165	2.031 (5.221)	0.591 (1.477)	6.260	1.431	-	25	330-0300-0000
- / 315	12.756	1.958 (4.931)	0.591 (1.477)	6.575	1.499	-	25	330-0315-0000
- / 325	13.150	1.886 (4.786)	0.591 (1.181)	6.772	1.546	-	25	330-0325-0000
- / 350	14.134	1.740 (4.496)	0.591 (1.181)	7.244	1.667	-	25	330-0350-0000
- / 400	16.102	1.523 (3.916)	0.443 (0.591)	8.228	1.902	-	25	330-0400-0000
- / 450	18.071	1.378 (3.481)	0.443 (0.591)	9.213	2.137	-	25	330-0450-0000
- / 500	20.079	1.233 (3.046)	0.443 (0.591)	10.236	2.944	-	25	330-0500-0000

## Accessories



CONNECT 270-271



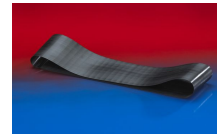
CONNECT 223



CLAMP 213



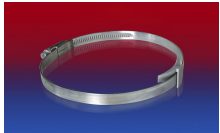
CLAMP 212



CONNECT 228



CLAMP 217



CLAMP 210 BRIDGE  
CLAMP

Positive and negative pressure ratings are the recommended maximum operating values. Products can be manufactured to meet higher operating values upon request. The bend radius is calculated from the center of the hose in an arched position. Additional information at [www.norres.com/us/technology/](http://www.norres.com/us/technology/). NORRES reserves the right to modify technical data at any time. Technical data based on tests at 68 °F and are approx. values. Proper use and maintenance of NORRES hoses is the sole responsibility of purchaser and ultimate user of the product. The individual conditions, applications and the number of variables make firm recommendations technically impossible. This information is intended as a general guide only.