

PROTAPE® PVC 310 (LD)



PVC hose, light

Applications

- flexible hose/ ducting for gases and for dust, powder, fibers
- extraction unit, dust collection systems, filter system, oil mist extraction
- galvanic extraction
- chemical industry: chemical vapors, vapor return hose at loading arm, paint steam, spray mist extraction
- X-ray machine: cable protection conduit (special type on request)
- heating hose: exterior hose as protection hose

Properties

- lightweight

- highly flexible + compressible 3:1
- good resistance to alkalis and acids
- good resistance to chemicals
- flame-retardant according to: UL94-HB
- phthalate-free
- conforms to RoHS guideline
- REACH according to --> Technology / Technical Information / REACH

Temperature range

- 5°F to 160°F

- short time to 175°F

Design

- PROTAPE® tape hose
- spring steel wire integrated in wall
- wall: high grade soft PVC
- wall thickness 0.02 in approx.

Delivery variants

- further diameters and lengths available on request
- gray (standard)
- special colors: transparent, full colored
- customer-specific branding

I.D.	outer Ø	Pressure	Vacuum	Bending radius	Weight	Dimensions in Stock	Production lengths	Order No.
(in / mm)	(in)	(psi)	(inHG)	(in)	(lb/ft)	(ft)	(ft)	
- / 30	1.457	13.489	5.906	0.866	0.161	-	25 50	310-0030-0000
1,25 / 32	1.535	12.691	5.906	0.906	0.175	-	25 50	310-0032-0000
1,5 / 38	1.772	10.733	5.463	1.024	0.202	25 50	-	310-0038-0000
- / 40	1.850	10.225	5.315	1.063	0.215	-	25 50	310-0040-0000
2 / 50-51	2.283	5.947	4.577	1.299	0.208	25 50	-	310-0050-0000
- / 55	2.480	5.366	4.134	1.417	0.222	-	5 10	310-0055-0000
2,36 / 60	2.677	4.931	3.544	1.496	0.242	-	25 50	310-0060-0000
2,5 / 63-65	2.874	4.569	3.101	1.614	0.262	25 50	-	310-0065-0000
- / 70	3.071	4.279	2.658	1.693	0.282	-	25 50	310-0070-0000
3 / 75-76	3.268	3.989	2.510	1.811	0.302	25 50	-	310-0075-0000
- / 80	3.465	3.699	2.215	1.890	0.316	-	25 50	310-0080-0000
3,5 / 89-90	3.858	3.336	1.919	2.087	0.356	25 50	-	310-0090-0000
4 / 100-102	4.252	2.973	1.477	2.283	0.383	25 50	-	310-0100-0000
- / 110	4.646	2.683	1.329	2.480	0.417	-	25 50	310-0110-0000
4,5 / 114-115	4.843	2.611	1.329	2.598	0.437	25 50	-	310-0115-0000
4,72 / 120	5.039	2.466	1.329	2.677	0.457	-	25 50	310-0120-0000
5 / 125-127	5.236	2.393	1.034	2.795	0.477	25 50	-	310-0125-0000
- / 130	5.433	2.321	1.034	2.874	0.491	-	25 50	310-0130-0000
5,5 / 140	5.827	2.103	1.034	3.071	0.531	25 50	-	310-0140-0000
6 / 150-152	6.220	1.958	1.034	3.268	0.565	25 50	-	310-0150-0000
6,3 / 160	6.614	1.886	0.886	3.465	0.585	-	25 50	310-0160-0000
7 / 178-180	7.402	1.668	0.738	3.858	0.672	25 50	-	310-0180-0000
8 / 200-203	8.189	1.523	0.738	4.252	0.746	25	-	310-0200-0000
- / 225	9.173	1.305	0.443	4.764	0.840	-	25	310-0225-0000
- / 250	10.157	1.233	0.295	5.236	0.934	-	25	310-0250-0000

Positive and negative pressure ratings are the recommended maximum operating values. Products can be manufactured to meet higher operating values upon request. The bend radius is calculated from the center of the hose in an arched position. Additional information at www.norres.com/us/technology/. NORRES reserves the right to modify technical data at any time. Technical data based on tests at 68°F and are approx. values. Proper use and maintenance of NORRES hoses is the sole responsibility of purchaser and ultimate user of the product. The individual conditions, applications and the number of variables make firm recommendations technically impossible. This information is intended as a general guide only.

PROTAPE® PVC 310 (LD)

I.D.	outer Ø	Pressure	Vacuum	Bending radius	Weight	Dimensions in Stock	Production lengths	Order No.
(in / mm)	(in)	(psi)	(inHG)	(in)	(lb/ft)	(ft)	(ft)	
- / 300	12.165	1.015	0.295	6.260	1.310	-	25	310-0300-0000

Special type DB.P1: larger pitch, higher compressibility, 0.4mm wall thickness, less weight, in stock only in Italy

- / 30	1.378	12.328	4.134	0.709	0.094	-	32,5 50 65	310-0030-2025
- / 40	1.772	9.355	3.101	0.945	0.121	-	32,5 50 65	310-0040-2025
2 / 50-51	2.205	7.470	2.540	1.181	0.155	-	32,5 50 65	310-0050-2025
2,36 / 60	2.559	6.237	2.126	1.417	0.181	-	32,5 50 65	310-0060-2025
2,5 / 63-65	2.717	5.802	1.919	1.496	0.195	-	32,5 50 65	310-0065-2025
- / 70	2.953	5.366	1.772	1.654	0.215	-	32,5 50 65	310-0070-2025
3 / 75-76	3.189	5.004	1.772	1.772	0.228	-	32,5 50 65	310-0075-2025
- / 80	3.346	4.714	1.624	1.890	0.242	-	32,5 50 65	310-0080-2025
3,5 / 89-90	3.740	4.206	1.477	2.087	0.269	-	32,5 50 65	310-0090-2025
4 / 100-102	4.252	3.771	1.329	2.362	0.255	-	32,5 50 65	310-0100-2025
- / 110	4.606	3.481	1.181	2.598	0.276	-	32,5 50 65	310-0110-2025
4,72 / 120	5.000	3.191	1.034	2.835	0.302	-	32,5 50 65	310-0120-2025
5 / 125-127	5.197	3.191	1.034	2.953	0.316	-	32,5 50 65	310-0125-2025
- / 130	5.394	2.901	0.974	3.071	0.329	-	32,5 50 65	310-0130-2025
5,5 / 140	5.787	2.683	0.886	3.307	0.349	-	32,5 50 65	310-0140-2025
6 / 150-152	6.142	2.538	0.886	3.543	0.376	-	32,5 50 65	310-0150-2025
6,3 / 160	6.575	2.393	0.886	3.780	0.403	-	32,5 50 65	310-0160-2025
7 / 178-180	7.323	2.103	0.738	4.213	0.450	-	32,5 50 65	310-0180-2025
8 / 200-203	8.268	1.886	0.650	4.724	0.484	-	32,5 50 65	310-0200-2025
- / 225	9.213	1.668	0.561	5.315	0.544	-	32,5 50 65	310-0225-2025
- / 250	10.197	1.523	0.532	5.906	0.605	-	32,5 50 65	310-0250-2025
- / 275	11.181	1.378	0.472	6.496	0.672	-	32,5 50 65	310-0275-2025
- / 300	12.165	1.305	0.443	7.087	0.726	-	32,5 50 65	310-0300-2025
- / 350	14.173	1.088	0.354	8.268	0.914	-	32,5 40	310-0350-2025
- / 400	16.142	0.943	0.325	9.449	1.008	-	32,5 40	310-0400-2025
- / 450	18.110	0.870	0.295	10.630	1.223	-	32,5 40	310-0450-2025
- / 500	20.079	0.725	0.266	11.811	1.358	-	32,5 40	310-0500-2025

Accessories



CONNECT 228



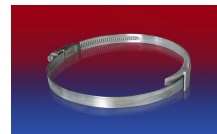
CONNECT 270-271



CONNECT 223



CLAMP 213



CLAMP 210 BRIDGE CLAMP



CLAMP 212



CLAMP 217

Positive and negative pressure ratings are the recommended maximum operating values. Products can be manufactured to meet higher operating values upon request. The bend radius is calculated from the center of the hose in an arched position. Additional information at www.norres.com/us/technology/. NORRES reserves the right to modify technical data at any time. Technical data based on tests at 68 °F and are approx. values. Proper use and maintenance of NORRES hoses is the sole responsibility of purchaser and ultimate user of the product. The individual conditions, applications and the number of variables make firm recommendations technically impossible. This information is intended as a general guide only.