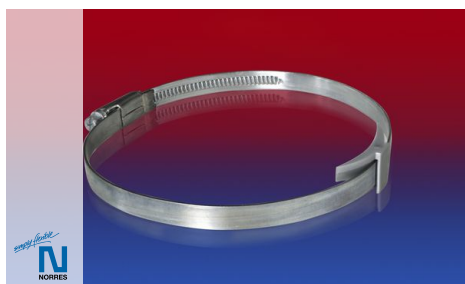


# CLAMP 210 BRIDGE CLAMP



Clamp with plastic bridge for attaching externally corrugated spiral hoses

## Properties

- practically leak-proof and secure clamping with special bridge geometry
- easily and quickly fitted
- re-usable

## Design

- multi-piece
- conforms to RoHS guideline
- REACH according to --> Technology / Technical Information / REACH

## Delivery variants

- Bridge: PA6
- Quality: W1; Clamp strip + screw + body: galvanised steel
- 10 pieces plastic bridge with 10 pieces CLAMP 208 loosely welded in a bag
- silver

Suitable for hose I.D.	Band width	PU	Order No.
(in)	(in)	(Pcs)	
25-31	0.354	10	210-0025-0000
32-39	0.354	10	210-0032-0000
40-49	0.354	10	210-0040-0000
50-59	0.354	10	210-0050-0000
60-69	0.354	10	210-0060-0000
70-79	0.354	10	210-0070-0000
80-89	0.354	10	210-0080-0000
90-99	0.354	10	210-0090-0000
100-109	0.354	10	210-0100-0000
110-119	0.354	10	210-0110-0000
120-129	0.354	10	210-0120-0000
130-139	0.354	10	210-0130-0000
140-149	0.354	10	210-0140-0000
150-159	0.354	10	210-0150-0000
160-169	0.354	10	210-0160-0000
170-179	0.354	10	210-0170-0000
180-189	0.354	10	210-0180-0000
190-199	0.354	10	210-0190-0000
200-209	0.354	10	210-0200-0000

## Accessories



CONNECT 228



CONNECT 270-271

Positive and negative pressure ratings are the recommended maximum operating values. Products can be manufactured to meet higher operating values upon request. The bend radius is calculated from the center of the hose in an arched position. Additional information at [www.norres.com/us/technology/](http://www.norres.com/us/technology/). NORRES reserves the right to modify technical data at any time. Technical data based on tests at 68 °F and are approx. values. Proper use and maintenance of NORRES hoses is the sole responsibility of purchaser and ultimate user of the product. The individual conditions, applications and the number of variables make firm recommendations technically impossible. This information is intended as a general guide only.