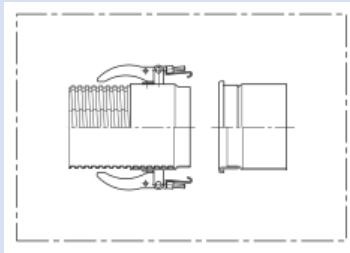


CONNECT 206



Connectors for connecting or attaching metal hoses

Properties

- conforms to RoHS guideline

- Quick-release coupling 206**: quick-release coupling with several clamp clips, option of coupling with clamp clips or flange with flat face, extension at one end for attaching the metal hose
- REACH according to --> Technology / Technical Information / REACH

Design

- Stainless Steel (INOX)

Delivery variants

- further diameters available on request

No. Clamp	Suitable for Hose I.D.	Order No.
clips	(mm)	
Assembly; (please select the hose separately); rivetting		
-	-	206-0000-2905
Quick-Release Coupling 206 Coupling with Clamp Clips Stainless Steel (INOX)		
2	100	206-0100-2015
2	125	206-0125-2015
2	150	206-0150-2015
3	200	206-0200-2015
3	250	206-0250-2015
3	300	206-0300-2015
Quick-Release Coupling 206 Flange Stainless Steel (INOX)		
2	100	206-0100-2016
2	125	206-0125-2016
2	150	206-0150-2016
3	200	206-0200-2016
3	250	206-0250-2016
3	300	206-0300-2016

Overpressure and underpressure are recommended threshold operating values, products can be subjected to higher loads upon request. The bending radius is measured through the inside of the hose arch. The right to make technical modifications is reserved. All values determined at 20°C and are approx. data. Additional information at www.norres.com/en/technology/.