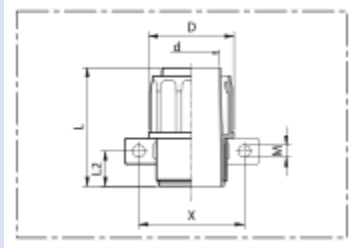


AD-H 181



Plastic conduit connector with integrated inner socket; rotary mounting flange

Applications

- cable protection: cable protection screw connection for assembling of a fitting protection hose, cable protection tube, cable protection hose, electric installation, switch cabinets, switch cabinet installation, cable harnessing/ cable assembly

Properties

- IP 54 to EN/ IEC 60529
- self-locking conduit assembly
- inner socket protects cables from damage

- easily and quickly fitted
- one-piece
- good resistance to chemicals
- flame-retardant
- designed according to EN 60204 for plant and mechanical engineering
- conforms to RoHS guideline

Temperature range

- 15°F to 230°F

Design

- accessories
- rotary plastic (PP) mounting flange with fastening holes

Delivery variants

- gray (standard)
- special colors: full colored

Nominal length tube (in)	Total length L (in)	Ø-M (in)	Length L2 (in)	O.D. D (in)	I.D. d (in)	X (in)	Weight (lb/100pcs)	PU (Pcs)	Order No.
PU: 10									
0.394	1.614	0.224	0.413	1.417	0.217	0.984	1.103	10	181-3010-9010
0.551	1.732	0.224	0.492	1.575	0.346	1.142	1.764	10	181-3014-9010
0.827	2.047	0.224	0.610	1.969	0.583	1.457	3.528	10	181-3021-9010
1.063	2.165	0.224	0.650	2.244	0.764	1.693	4.631	10	181-3027-9010
2.047	2.453	0.264	0.748	3.465	1.650	2.835	12.789	10	181-3052-9010
2.205	2.480	0.264	0.748	3.661	1.807	2.992	15.215	10	181-3056-9010
PU: 50									
0.394	1.614	0.224	0.413	1.417	0.217	0.984	1.103	50	181-3010-9050
0.551	1.732	0.224	0.492	1.575	0.346	1.142	1.764	50	181-3014-9050
0.827	2.047	0.224	0.610	1.969	0.583	1.457	3.528	50	181-3021-9050
PU: 25									
1.063	2.165	0.224	0.650	2.244	0.764	1.693	4.631	25	181-3027-9025
1.417	2.276	0.264	0.669	2.638	1.098	2.087	7.277	25	181-3036-9025
1.772	2.402	0.264	0.728	3.150	1.402	2.559	10.143	25	181-3045-9025
PU: 2									
1.417	2.276	0.264	0.669	2.638	1.098	2.087	7.277	2	181-3036-9002
1.772	2.402	0.264	0.728	3.150	1.402	2.559	10.143	2	181-3045-9002
2.205	2.480	0.264	0.748	3.661	1.807	2.992	15.215	2	181-3056-9002

Positive and negative pressure ratings are the recommended maximum operating values. Products can be manufactured to meet higher operating values upon request. The bend radius is calculated from the center of the hose in an arched position. Additional information at www.norres.com/us/technology/. NORRES reserves the right to modify technical data at any time. Technical data based on tests at 68°F and are approx. values. Proper use and maintenance of NORRES hoses is the sole responsibility of purchaser and ultimate user of the product. The individual conditions, applications and the number of variables make firm recommendations technically impossible. This information is intended as a general guide only.