

Abrasion-proof, oil resistant and robust polyurethane protection conduit; liquid tight; spiral: plastic coated spring steel wire

### Applications

- cable protection: cable protection conduit, cable protection tube, cable protection hose, electric installation, switch cabinets, switch cabinet installation, cable harnessing/ cable assembly
- X-ray machine: cable protection conduit (special type on request)
- medical equipment/ medical technology, healthcare sector: cable protection conduit, air supply hose, extraction hose

### Properties

- up to max. IP 68 to EN/ IEC 60529 (depending on conduit)
- highly flexible + compressible
- highly abrasion resistant
- increased resistance to tear, pressure and impact

- microbe and hydrolysis resistant
- good resistance to oil, gasoline and chemicals
- very good low temperature flexibility
- approved to DIN EN 50369
- conforms to RoHS guideline

### Temperature Range

- -40°C to 90°C
- short time to 125°C

### Design

- WELLFLEX® design
- plastic coated spring steel wire
- wall: special premium ether-polyurethane (Pre-PUR®)
- wall thickness 0.4 - 0.9 mm approx. depending on diameter

### Delivery variants

- further diameters and lengths available on request
- metallic blue (standard)
- special colours: full coloured
- customer-specific branding

Nominal width connecting part (mm)	I.D. (mm)	outer Ø (mm)	Bending Radius (middle of hose) (mm)	Dyn. Bending Radius acc. to Norm (mm)	Weight (kg/m)	PU (m)	Order No.
<b>PU: 10</b>							
10	7	10.00	10	28	0.05	10	118-3010-9010
14	10	14.00	14	40	0.08	10	118-3014-9010
17	13	17.00	17	48	0.12	10	118-3017-9010
19	15	19.00	19	55	0.13	10	118-3019-9010
21	16	21.00	21	60	0.14	10	118-3021-9010
27	21	27.00	27	75	0.26	10	118-3027-9010
36	30	36.00	36	100	0.35	10	118-3036-9010
45	38	45.00	45	124	0.54	10	118-3045-9010
52	44	52.00	52	143	0.67	10	118-3052-9010
56	48	56.00	56	154	0.70	10	118-3056-9010
<b>PU: 50</b>							
10	7	10.00	10	28	0.05	50	118-3010-9050
14	10	14.00	14	40	0.08	50	118-3014-9050
17	13	17.00	17	48	0.12	50	118-3017-9050
19	15	19.00	19	55	0.13	50	118-3019-9050
21	16	21.00	21	60	0.14	50	118-3021-9050
27	21	27.00	27	75	0.26	50	118-3027-9050
<b>PU: 25</b>							

Overpressure and underpressure are recommended threshold operating values, products can be subjected to higher loads upon request. The bending radius is measured through the inside of the hose arch. The right to make technical modifications is reserved. All values determined at 20°C and are approx. data. Additional information at [www.norres.com/en/technology/](http://www.norres.com/en/technology/).

# WELLFLEX® PUR 118

Nominal width connecting part (mm)	I.D. (mm)	outer Ø (mm)	Bending Radius (middle of hose) (mm)	Dyn. Bending Radius acc. to Norm (mm)	Weight (kg/m)	PU (m)	Order No.
36	30	36.00	36	100	0.35	25	118-3036-9025
45	38	45.00	45	124	0.54	25	118-3045-9025
52	44	52.00	52	143	0.67	25	118-3052-9025
56	48	56.00	56	154	0.70	25	118-3056-9025

## Accessories



GM 164



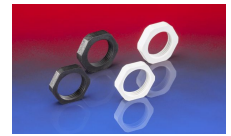
AD-K 180



AU 159



AD-H 181



GK 169

Overpressure and underpressure are recommended threshold operating values, products can be subjected to higher loads upon request. The bending radius is measured through the inside of the hose arch. The right to make technical modifications is reserved. All values determined at 20°C and are approx. data. Additional information at [www.norres.com/en/technology/](http://www.norres.com/en/technology/).