

Antistatic polyurethane hose, light weight, black

Applications

- flexible hose/ ducting for gases and for abrasive dust, powder, fibers
- extraction unit, dust collection systems, filter system, oil mist extraction
- extraction arm
- explosion hazard area
- textile industry, fiber extraction: spinning machine, knitting machine, weaving loom machine
- animal stall, animal shed: barn ventilation
- clean room ventilation, semiconductor production machine
- surface preparation: shot blasting/ sand blasting recovery (blasting chamber), ship yard, stripping machine, flooring preparation machine, grinding machine
- heating hose: exterior hose as protection hose

Properties

- lightweight and reinforced
- highly flexible + compressible 3:1
- abrasion-resistant
- good resistance to oil, gasoline, and chemicals
- very good low temperature flexibility
- Permanently antistatic wall according to ISO 8031 electrical and surface resistance $< 10^9 \Omega$ (according to NFPA 652 10^8 - $10^9 \Omega$)
- in accordance with ATEX 2014/34/EU (1999/92/EC) and German TRGS 727: aspiration of combustible dust (zone 22 inside), for conveying of non-flammable liquids, for use in zone 1 and 2 (gases)
- conforms to RoHS guideline
- REACH according to --> Technology / Technical Information / REACH

Temperature range

- 40°F to 195°F

- short time to 255°F

Design

- PROTAPE® tape hose
- spring steel wire integrated in wall
- wall: permanently antistatic premium ester-polyurethane (Pre-PUR®)
- wall thickness 0.025 in approx.

Delivery variants

- further diameters and lengths available on request
- black (standard)
- special colors: partially colored, completely colored
- customer-specific branding

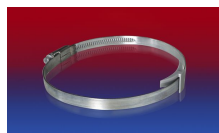
I.D. (in / mm)	outer Ø (in)	Pressure DIN 26057 (50% Elongation) (psi)	Vacuum DIN 26057 (axially fixed) (inHG)	Bending radius (in)	Weight (lb/ft)	Dimensions in Stock (ft)	Order No.
- / 40	1.850	14.794 (38.291)	9.893 (20.376)	1.063	0.155	50	330-0040-3030
2 / 50-51	2.283	11.893 (30.748)	6.497 (25.691)	1.299	0.249	50	330-0050-3030
2,36 / 60	2.362	9.935 (25.672)	5.315 (18.013)	1.496	0.289	50	330-0060-3030
3 / 75-76	3.268	7.977 (20.596)	4.282 (11.812)	1.811	0.363	50	330-0075-3030
- / 80	3.465	7.470 (19.290)	3.987 (10.336)	1.890	0.383	50	330-0080-3030
4 / 100-102	4.252	6.019 (15.519)	2.362 (9.154)	2.677	0.457	50	330-0100-3030
4,72 / 120	5.039	5.004 (12.909)	1.919 (6.497)	2.677	0.538	50	330-0120-3030
5 / 125-127	5.236	4.859 (12.473)	1.919 (5.906)	2.795	0.565	50	330-0125-3030
5,5 / 140	5.827	4.279 (11.023)	1.624 (4.725)	3.071	0.565	50	330-0140-3030
6 / 150-152	6.220	3.989 (10.298)	1.624 (4.134)	3.268	0.672	50	330-0150-3030
6,3 / 160	6.614	3.771 (9.718)	1.477 (3.544)	3.465	0.706	50	330-0160-3030
8 / 200-203	8.189	3.046 (7.832)	0.886 (3.248)	4.252	0.901	50	330-0200-3030

Accessories

PROTAPE® PUR 330 AS BLACK (LD)



CONNECT 270-271



CLAMP 210 BRIDGE
CLAMP



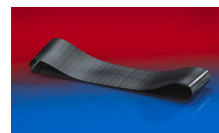
CONNECT 223



CLAMP 213



CLAMP 217



CONNECT 228



CLAMP 212