

Antistatic food hose and pharmaceutical hose, light weight, stainless steel (INOX)

Applications

- flexible hose/ ducting for gases and for abrasive dust, powder, fibers
- food industry, pharmaceutical industry: food, pharmaceutical
- conveying of dry foods e.g. rice, cereals, sugar, milk powder, powders, coffee, tea, grains, flour, frozen foods
- extraction arm
- explosion hazard area
- mixer, dryer, packaging machine, bulk-bag (big bag)-charging and discharging, mill

Properties

- lightweight and reinforced
- highly flexible + compressible 3:1
- abrasion-resistant

- Approved by an independent testing laboratory for the complete hose acc. to EU-Directive 10/2011, EC 1935/2004 and EU 2015/174, food grade polyurethane, complies with: FDA 21 CFR 177.2600
- Approval acc. to EU-Directive 10/2011 (food simulant E) and EC 1935/2004
- odorless and tasteless
- microbe and hydrolysis resistant
- good resistance to oil, gasoline, and chemicals
- very good low temperature flexibility
- Permanently antistatic wall: according to ISO 8031 electrical and surface resistance $<10^9 \Omega$ (according to TRGS 727 $<2,5 \cdot 10^8 \Omega \cdot m$ and NFPA 652 $10^8-10^9 \Omega$)
- in accordance with ATEX 2014/34/EU (1999/92/EC) and German TRGS 727: pneumatic transport of flammable dusts and bulk materials (Zone 20, 21, 22 inside), aspiration of combustible dusts (Zone 22 inside),
- in accordance with ATEX 2014/34/EU (1999/92/EC) and German TRGS 727: for conveying for flammable liquids (inside zone 0, 1, 2), for conveying for non-flammable liquids, for use in zone 1 and 2 (gases), for use in zone 0 (gases)
- manufacturing process acc. GMP EC 2023/2006
- conforms to RoHS guideline

- REACH according to --> Technology / Technical Information / REACH

Temperature range

- 40 °F to 195 °F

Design

- PROTAPE® tape hose
- spring steel wire integrated in wall
- spiral: stainless steel wire (INOX)
- wall: permanently antistatic premium ether-polyurethane (Pre-PUR®)
- wall thickness 0.025 in approx.

Delivery variants

- further diameters and lengths available on request
- transparent (standard)
- customer-specific branding

I.D.	outer Ø	Pressure DIN 26057 (50% Elongation)	Vacuum DIN 26057 (axially fixed)	Bending radius	Weight	Dimensions in Stock	Production lengths	Order No.
(in / mm)	(in)	(psi)	(inHG)	(in)	(lb/ft)	(ft)	(ft)	
1,5 / 38	1.772	15.592 (63.237)	10.483 (22.738)	1.024	0.148	25	-	330-0038-1018
- / 40	1.850	14.794 (60.192)	9.893 (20.376)	1.063	0.161	-	25	330-0040-1018
2 / 50-51	2.283	11.893 (48.443)	6.497 (25.691)	1.299	0.255	25	-	330-0050-1018
2,36 / 60	2.677	9.935 (40.611)	5.315 (18.013)	1.496	0.296	-	25	330-0060-1018
2,5 / 63-65	2.874	9.210 (37.565)	4.872 (15.356)	1.614	0.316	25	-	330-0065-1018
- / 70	3.071	8.557 (34.955)	4.577 (13.289)	1.693	0.343	-	25	330-0070-1018
3 / 75-76	3.268	7.977 (32.634)	4.282 (11.812)	1.811	0.370	25	-	330-0075-1018
- / 80	3.465	7.470 (30.603)	3.987 (10.336)	1.890	0.390	-	25	330-0080-1018
4 / 100-102	4.252	6.019 (24.657)	2.362 (9.154)	2.283	0.464	25	-	330-0100-1018
5 / 125-127	5.236	4.859 (19.725)	1.919 (5.906)	2.795	0.571	25	-	330-0125-1018
6 / 150-152	6.220	3.989 (16.535)	1.624 (4.134)	3.268	0.679	25	-	330-0150-1018
6,3 / 160	6.614	3.771 (15.519)	1.477 (3.544)	3.465	0.719	-	25	330-0160-1018

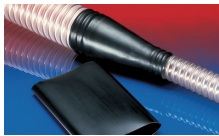
Positive and negative pressure ratings are the recommended maximum operating values. Products can be manufactured to meet higher operating values upon request. The bend radius is calculated from the center of the hose in an arched position. Additional information at www.norres.com/us/technology/. NORRES reserves the right to modify technical data at any time. Technical data based on tests at 68 °F and are approx. values. Proper use and maintenance of NORRES hoses is the sole responsibility of purchaser and ultimate user of the product. The individual conditions, applications and the number of variables make firm recommendations technically impossible. This information is intended as a general guide only.

PROTAPE® PUR-INOX 330 FOOD-AS (LD)



I.D.	outer Ø	Pressure DIN 26057 (50% Elongation)	Vacuum DIN 26057 (axially fixed)	Bending radius	Weight	Dimensions in Stock	Production lengths	Order No.
(in / mm)	(in)	(psi)	(inHG)	(in)	(lb/ft)	(ft)	(ft)	
7 / 178-180	7.402	3.336 (13.779)	1.329 (2.953)	3.858	0.806	25	-	330-0180-1018
8 / 200-203	8.189	3.046 (12.328)	0.886 (3.248)	4.252	0.907	25	-	330-0200-1018
- / 250	10.157	2.393 (9.863)	0.738 (2.067)	5.236	1.122	-	25	330-0250-1018
- / 300	12.126	2.031 (8.267)	0.591 (1.477)	6.220	1.458	-	25	330-0300-1018

Accessories



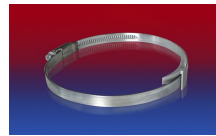
CONNECT 223



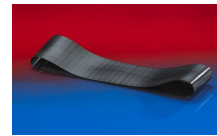
CLAMP 213



CLAMP 217



CLAMP 210 BRIDGE
CLAMP



CONNECT 228



CONNECT 270-271



CLAMP 212

Positive and negative pressure ratings are the recommended maximum operating values. Products can be manufactured to meet higher operating values upon request. The bend radius is calculated from the center of the hose in an arched position. Additional information at www.norres.com/us/technology/. NORRES reserves the right to modify technical data at any time. Technical data based on tests at 68 °F and are approx. values. Proper use and maintenance of NORRES hoses is the sole responsibility of purchaser and ultimate user of the product. The individual conditions, applications and the number of variables make firm recommendations technically impossible. This information is intended as a general guide only.