

CONNECT TANK TRUCK BRASS 252



Brass tank truck coupling

Applications

- silos and tankers: silo charging, silo discharging
- for conveying of dry media and liquids

Properties

- according to EN 14420 -6
- Not to be used for explosive fluids group 1 and not according to pressure equipment directive

- REACH according to --> Technology / Technical Information / REACH

Design

- material: brass

Size (mm)	Weight (kg/pcs)	Suitable for Hose I.D. (mm)	Order No.
replacement lip-seal for type MC, NBR black			
50	0,09	-	252-0050-8068
80	0,02	-	252-0075-8068
100	0,02	-	252-0100-8068
replacement thread-seal, PU black			
50	0,003	-	252-0050-8078
80	0,005	-	252-0075-8078
100	0,009	-	252-0100-8078
3) Type FC with inner thread ("coupling female/ piston ring / crown piece"), incl. clamping ring with lever			
50	0,67	-	252-0050-8297
80	1,17	-	252-0075-8297
100	1,72	-	252-0100-8297
4) Type MC with inner thread ("coupling male / curved piece")			
50	0,31	-	252-0050-8497
80	0,75	-	252-0075-8497
100	1,13	-	252-0100-8497
1) Hose adapter with outer thread, corrugated nozzle for band clamp fitting; suitable to CONNECT 229 CLAMP ASSEMBLY			
50	0,33	50	252-0050-8813
80	0,85	75	252-0075-8813
100	2,04	100	252-0100-8813
2) Hose adapter with outer thread, smooth nozzle and locking ring for clamp shell band fitting; suitable to CONNECT 231 SAFETY CLAMP ASSEMBLY			
50	0,34	50	252-0050-8823
80	0,83	75	252-0075-8823
100	1,63	100	252-0100-8823

Overpressure and underpressure are recommended threshold operating values, products can be subjected to higher loads upon request. The bending radius is measured through the inside of the hose arch. The right to make technical modifications is reserved. All values determined at 20 °C and are approx. data. Additional information at www.norres.com/en/technology/.

CONNECT TANK TRUCK BRASS 252

Accessories



CONNECT SAFETY
CLAMP ASSEMBLY 231



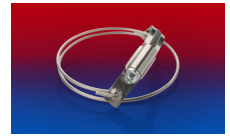
CONNECT 230



CLAMP 211



CLAMP 212



CLAMP 216