

METAL HOSE Agraff PUR 151



Abrasion-proof, oil resistant and polyurethane coated metal protection conduit; extremely robust and liquid tight; double folded metal profile

Applications

- cable protection: cable protection conduit, cable protection tube, cable protection hose, electric installation, switch cabinets, switch cabinet installation, cable harnessing/ cable assembly

Properties

- IP 68 to EN/ IEC 60529
- good screening factor (EMC)
- highly flexible
- highly abrasion resistant
- increased resistance to tear, pressure and impact

- microbe and hydrolysis resistant
- good resistance to oil, gasoline, and chemicals
- very good low temperature flexibility
- conforms to RoHS guideline

Temperature range

- -40 °F to 195 °F
- short time to 255 °F

Design

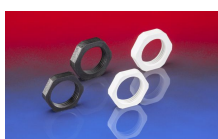
- Metal hose
- profiled metal strip, galvanised steel
- twice rolled profile
- wall: special premium ether-polyurethane (Pre-PUR®)

Delivery variants

- further diameters and lengths available on request
- metallic blue (standard)
- special colors: full colored
- customer-specific branding

Nominal width connecting part (in)	I.D. (mm)	outer Ø (in)	Bending radius (middle of hose) (in)	Weight (lb/ft)	PU (ft)	Order No.
PU: 10						
0.669	0.512	0.669	2.559	0.188	32.810	151-3017-9010
0.748	0.591	0.748	2.756	0.215	32.810	151-3019-9010
1.063	0.866	1.063	3.976	0.302	32.810	151-3027-9010
1.772	1.496	1.772	7.402	0.739	32.810	151-3045-9010
PU: 50						
0.669	0.512	0.669	2.559	0.188	164.050	151-3017-9050
0.827	0.669	0.827	3.031	0.235	164.050	151-3021-9050
1.063	0.866	1.063	3.976	0.302	164.050	151-3027-9050
PU: 25						
1.417	1.181	1.417	5.748	0.571	82.025	151-3036-9025
1.772	1.496	1.772	7.402	0.739	82.025	151-3045-9025
2.205	1.969	2.205	9.449	0.941	82.025	151-3056-9025

Accessories



Positive and negative pressure ratings are the recommended maximum operating values. Products can be manufactured to meet higher operating values upon request. The bend radius is calculated from the center of the hose in an arched position. Additional information at www.norres.com/us/technology/. NORRES reserves the right to modify technical data at any time. Technical data based on tests at 68 °F and are approx. values. Proper use and maintenance of NORRES hoses is the sole responsibility of purchaser and ultimate user of the product. The individual conditions, applications and the number of variables make firm recommendations technically impossible. This information is intended as a general guide only.

METAL HOSE Agraff PUR 151



GK 169

GM 164

AU 159

Positive and negative pressure ratings are the recommended maximum operating values. Products can be manufactured to meet higher operating values upon request. The bend radius is calculated from the center of the hose in an arched position. Additional information at www.norres.com/us/technology/. NORRES reserves the right to modify technical data at any time. Technical data based on tests at 68 °F and are approx. values. Proper use and maintenance of NORRES hoses is the sole responsibility of purchaser and ultimate user of the product. The individual conditions, applications and the number of variables make firm recommendations technically impossible. This information is intended as a general guide only.